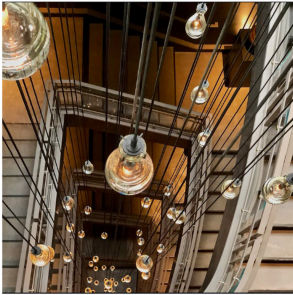
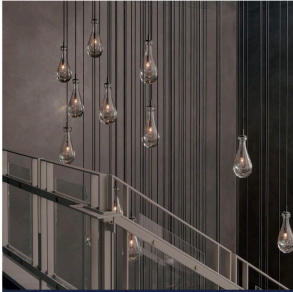
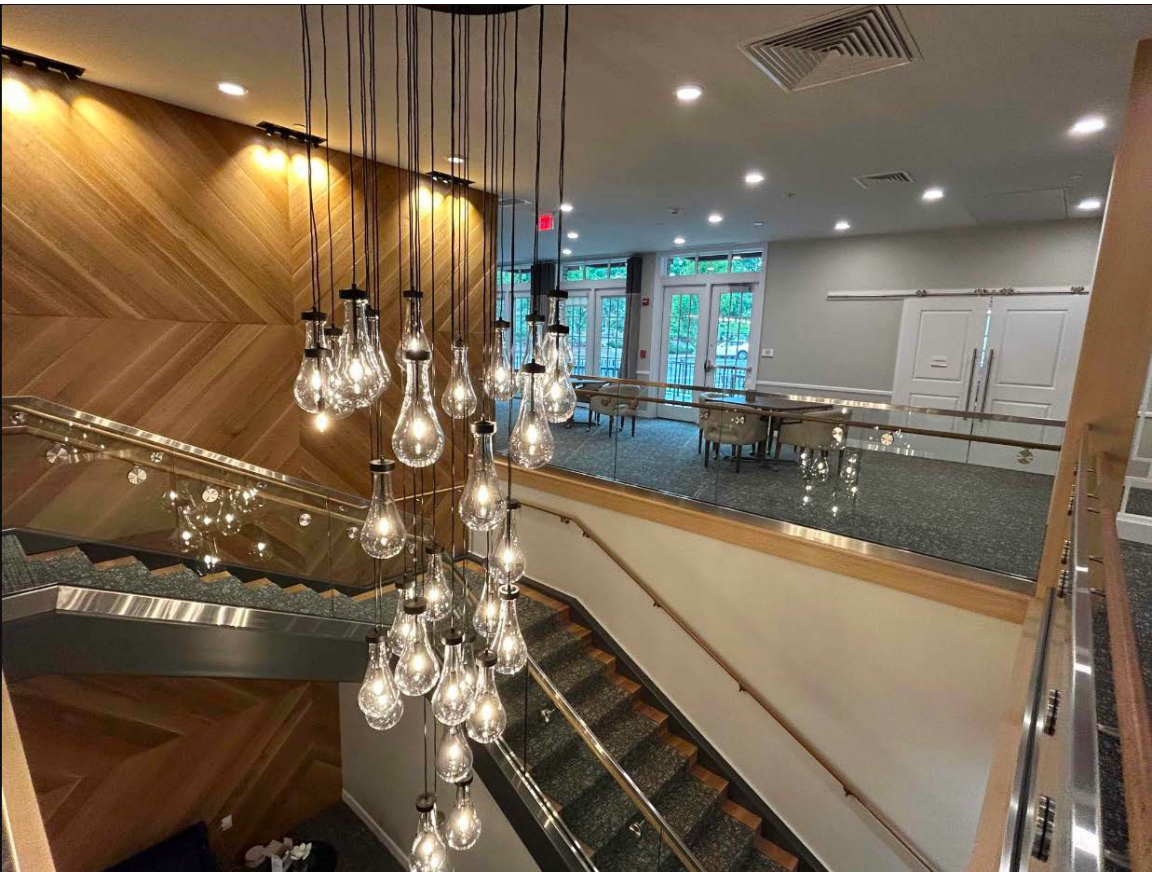




CENTURY

LIGHTING | ART | DESIGN



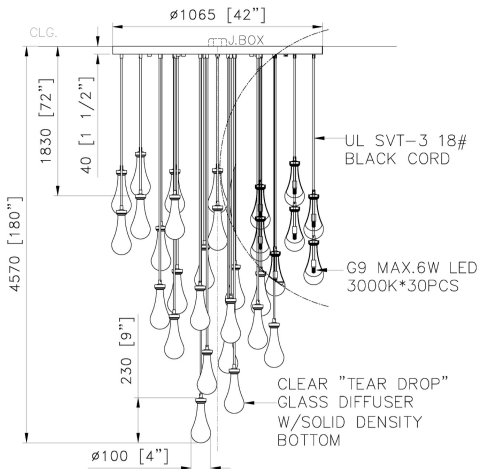






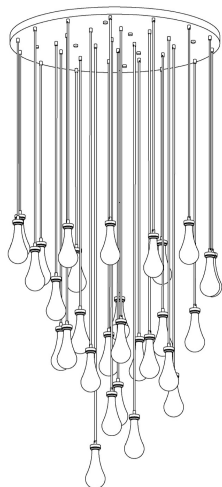
NOTES:

- 1) METAL-ALL EXPOSED METAL FINISH TO BE POWDER COATED MATTE BLACK OR "TBD"
 - 2) SHADE:30*COLORLESS CLEAR HAND BLOWN GLASS.
 - 3) SOCKETS:30PCS* G9 MAX.6W EA, LED, 3000K, DIMMABLE.120V.A.C. 50-60Hz. BULBS NOT INCLUDED.
 - 4) HARD WIRED
- UL/CUL APPROVED
 ***APPROX MAX. WEIGHTS: 150LBS

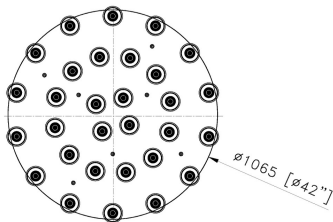


FRONT VIEW

SCALE: 1: 20



3D VIEW



BOTTOM VIEW

SCALE: 1: 20

CUSTOM CEILING FIXTURE

ITEM NO:FX-4242180-24 QTY:1 PC

Approval: Date: _____

With comments: _____

Signed By: _____

Estimated Leads time are contingent upon receiving approved submittals and are subject to change

Les Industries CENTURY Industries Inc.
 5645 Royalmount Ave.
 Montreal, Quebec, Canada H4P 2P9
 Tel:514-842-3933 Fax:514-842-7481
 Toll free Canada only:1-877-842-3934
 Date:2021/04/23 Rev: _____

Dwg. #

(yyyy/mm/dd)

(yyyy/mm/dd)

