



CENTURY

LIGHTING | ART | DESIGN

joekrauslighting

301-537-5808

joe@joekrauslighting.com

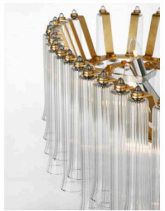
www.joekrauslighting.com





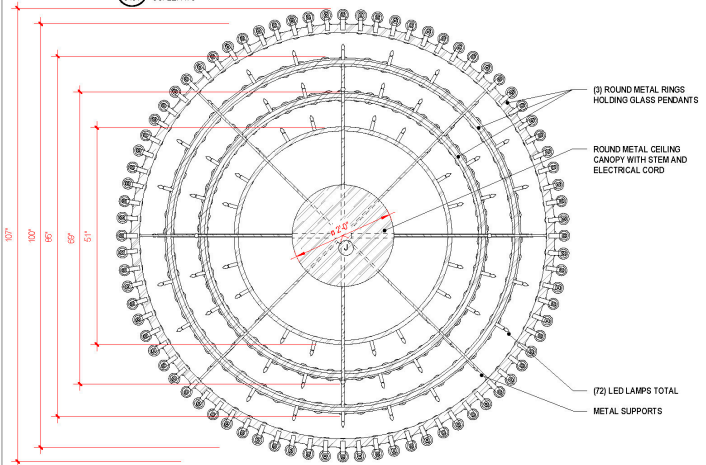




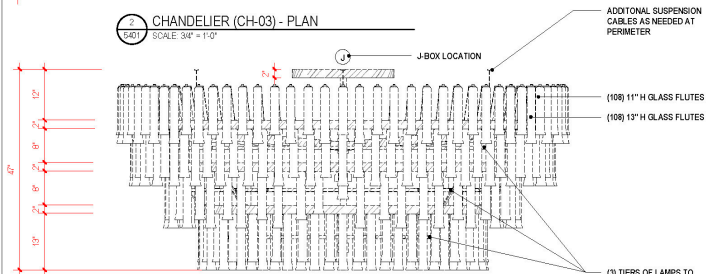


1 CHANDELIER (CH-03) - CONCEPT
5401 SCALE: NTS

*DETAILS OF BOLTS & FASTENERS



2 CHANDELIER (CH-03) - PLAN
5401 SCALE: 3/4" = 1'-0"



3 CHANDELIER (CH-03) - FRONT
5401 SCALE: 3/4" = 1'-0"

SCALE: As indicated
ISSUE DATE: 04/29/2025

QUANTITY: 3

PAGE 1 OF 2

PROJECT NO.: 3508

PROJECT NAME: DOUBLETREE - CENTER CITY

LOCATION: PHILADELPHIA, PA

RD · JONES

ARCHITECTURAL, INTERIOR DESIGN AND INTERIOR
700 & MARKET STREET, 3RD FLOOR, BALTIMORE, MD 21202
TEL: 410.528.4747 FAX: 410.528.4748
WWW.RDJONES.COM

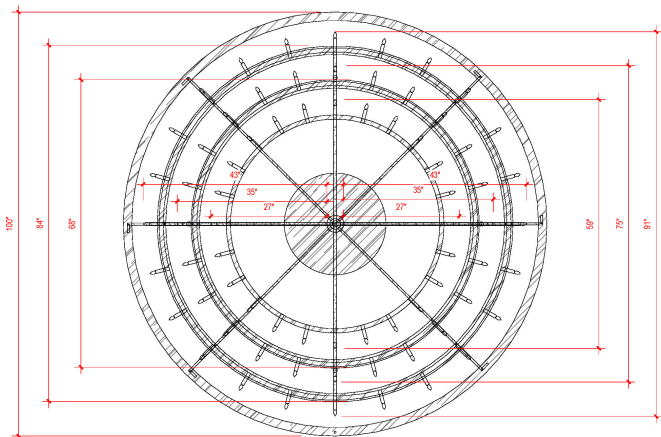
FINISH NOTES:

METAL: Painted Metal to look like Aged Brass - to match designer's sample
GLASS: Clear Vertical Ribbed Glass

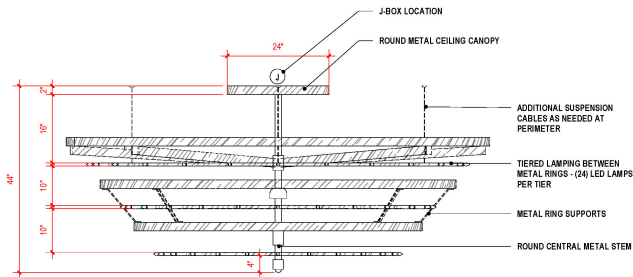
Lamping: (72) 5W E12 Candela LED, 120V, 2700K - Vendor to Provide

DRAWING TITLE:
Chandelier at Ormandy Ballroom - Level 1

SPEC #
5401

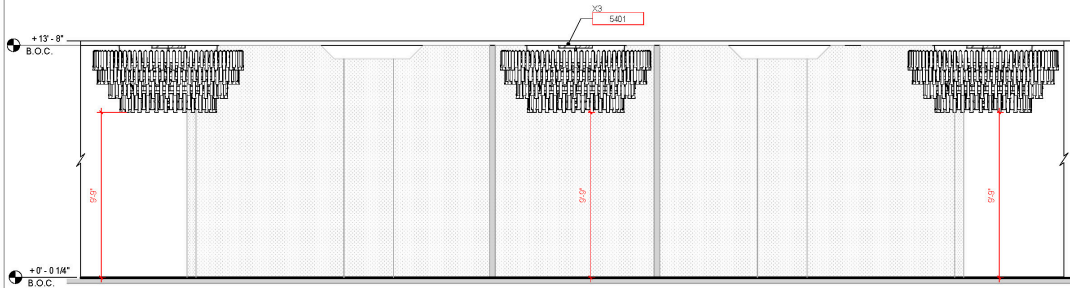


1 CHANDELIER (CH-03) INTERIOR STRUCTURE - PLAN
 SCALE: 3/4" = 1'-0"



2 CHANDELIER (CH-03) INTERIOR STRUCTURE - FRONT
 SCALE: 3/4" = 1'-0"

SCALE: 3/4" = 1'-0"	QUANTITY: 3	RD · JONES <small>REGISTERED ARCHITECTURAL DESIGN AND PROFESSIONAL ENGINEERING</small> <small>7016 MARKET STREET STE 2000 BALTIMORE, MD 21205</small> <small>TEL: 410-283-1700 FAX: 410-283-0750</small> <small>WWW.RDJONES.COM</small>	FINISH NOTES: METAL: Painted Metal to look like Aged Brass - to match designer's sample GLASS: Clear Vertical Ribbed Glass
ISSUE DATE: 04/29/2025	PAGE 1 of 2		PROJECT NO.: 3508
REVISION 1:	PROJECT NAME: DOUBLETREE - CENTER CITY	LOCATION: PHILADELPHIA, PA	Lamping: (72) 5W E12 Candela LED, 120V, 2700K - Vendor to Provide
REVISION 2:			DRAWING TITLE: Chandelier at Ormandy Ballroom - Level 1
			SPEC #: 5401



1
5401 DECORATIVE LIGHTING ELEVATION
5401 - CHANDELIER (CH-03)
SCALE: 1/4" = 1'-0"

SCALE: 1/4" = 1'-0"	QUANTITY: 3	 <small>INTERIOR DESIGN + ARCHITECTURE</small> <small>400 LAUREL STREET, PHILADELPHIA, PA 19106</small> <small>TEL: 484.224.7800 FAX: 484.224.7801</small> <small>WWW.RDJONES.COM</small>
ISSUE DATE: 03.28.2025	PAGE 2 OF 2	
REVISION 1:	PROJECT NO.: 3508	
REVISION 2:	PROJECT NAME: 3508 DoubleTree Center City	
REVISION 3:	LOCATION: 207 S Broad St, Philadelphia, PA 19107	

FINISH NOTES:

DRAWING TITLE:
Chandelier at Ormandy Ballroom - Level 1

SPEC #:
5401