



CENTURY

LIGHTING | ART | DESIGN

joekrauslighting 

301-537-5808

joe@joekrauslighting.com

www.joekrauslighting.com







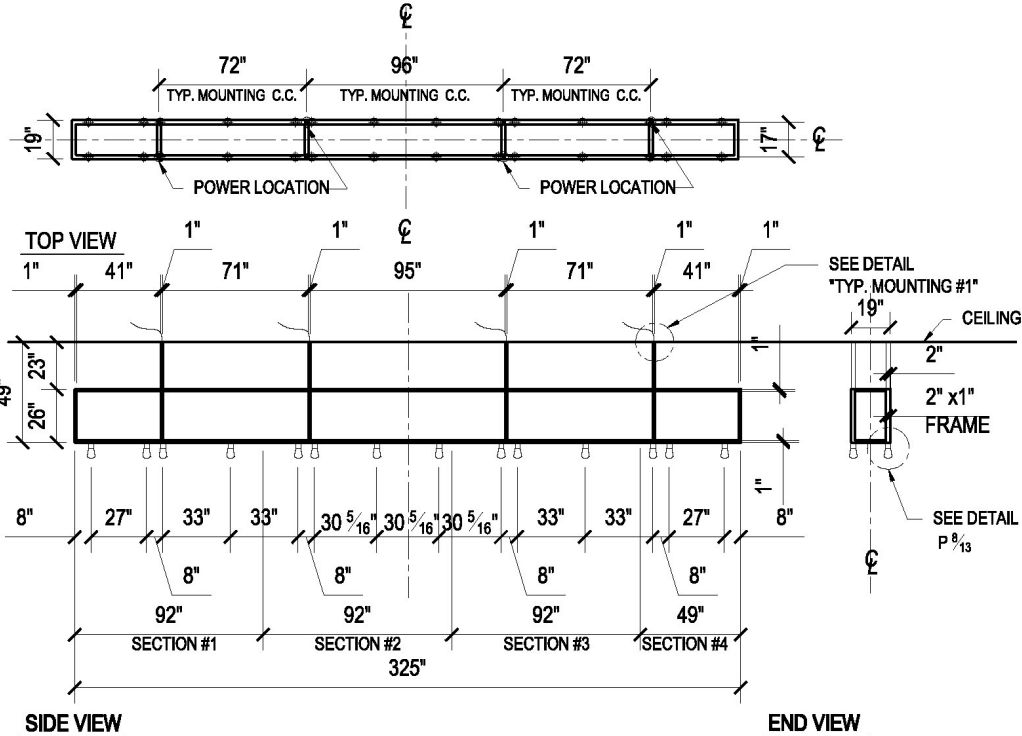


*ON SITE ASSEMBLY REQUIRED.
FABRICATED IN 4 SECTIONS.

4x POWER WHIPS OR J.BOXES REQUIRED BY OTHERS.

NOTE:

- 1) METAL: ALL EXPOSED METAL TO MATCH "CA-MT-01/AMMT-01" FINISH.
 - 2) SHADE: 2x "INTERIOR FROSTED LUCITE, LASER ETCHED FLAMENT".
 - 3) SOCKETS: 2x LED G0, 3000K, DIMMABLE 0-10V.
HARDWIRED, 120V.
- *+ADDITIONAL 2x BULBS PER ATTIC STOCK)
UL/CSA APPROVED.
APPROX MAX WEIGHT: 330LBS.



CUSTOM FIXTURE "A" @ DEMO KITCHEN
MODEL NO.: FXT A **QTY:1x**

Approval: ████ Date: Sept. 23rd 2021
With comments: via email -Jeremy Zelinger

Signed By: _____
Estimated Leads time are contingent upon receiving approved submittals and are subject to change.

1000 SOUTH CAPITOL ST.
WASHINGTON, DC.

Les Industries CENTURY Industries Inc.
5645 Royalmount Ave.
Montreal, Quebec, Canada H4P 2P9
tel: 514-842-3933 fax: 514-842-7481
Toll free Canada only : 1-877-842-3934
Date: 2020/12/22 rev: 2021/03/19

Dwg.#

P 1 / 13

(yyyy/mm/dd)

(yyyy/mm/dd)