



CENTURY

LIGHTING | ART | DESIGN

joekrauslighting

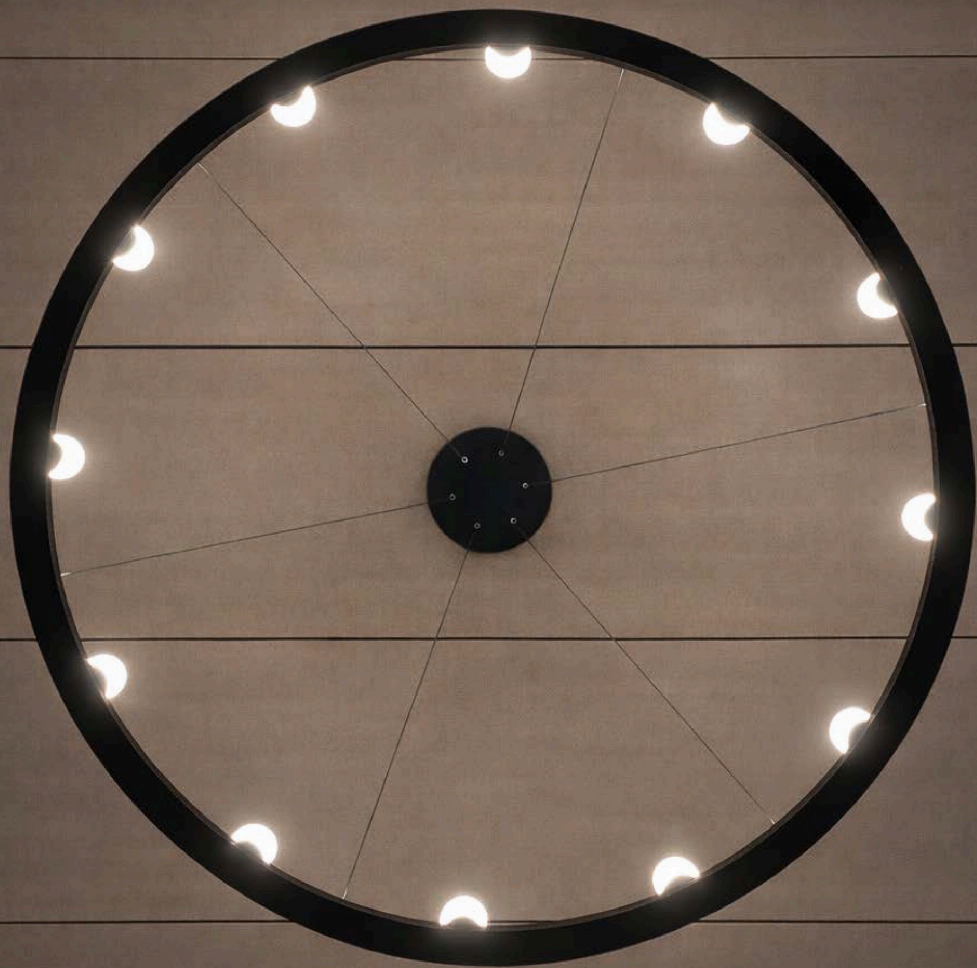
301-537-5808

[joe@joekrauslighting.com](mailto:joe@joekrauslighting.com)

[www.joekrauslighting.com](http://www.joekrauslighting.com)



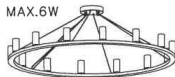
Custom Lobby Chandelier- 60"



NOTES:

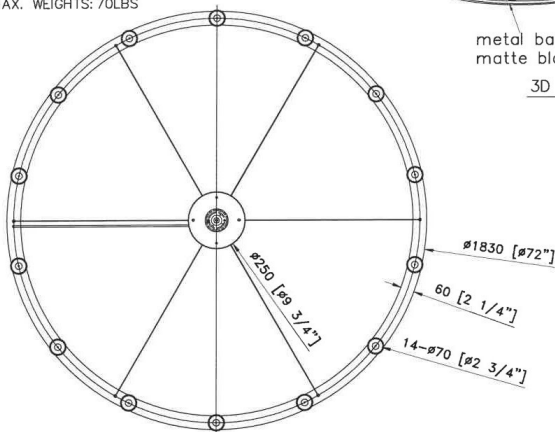
- 1)METAL: ALL EXPOSED METAL FINISH TO BE POWDER COATED "MATTE BLACK"
  - 2)SHADE: 14\*FROSTED CLEAR WHITE CYLINDERS
  - 3)SOCKET: 14\*CANDELABRA BASE, 120V.A.C. 60Hz,COMPATIBLE W/E12 B10 MAX.6W EA LED. 3000K. DIMMABLE.BULB NOT INCLUDED
  - 4)HARD WIRED.
- UL/CUL APPROVED  
 \*\*\*APPROX MAX. WEIGHTS: 70LBS

**K26**



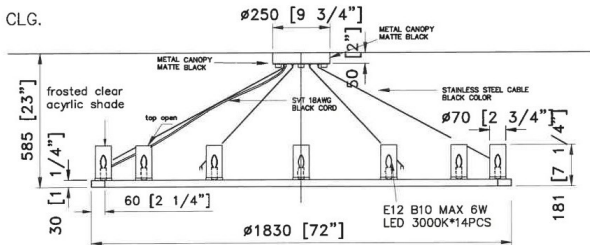
metal band  
matte black

3D VIEW



TOP VIEW  
SCALE: 1: 15

CLG.



FRONT VIEW  
SCALE: 1: 15

**CUSTOM DINING CHANDELIER @ASSISTED LIVING**

ITEM NO:K26 QTY:2X

Approval:  Date: \_\_\_\_\_

With comments: \_\_\_\_\_

Signed By: \_\_\_\_\_

Estimated Leads time are contingent upon receiving approved submittals and are subject to change

**Brightview Senior Living**

North Fairfax, VA

Les Industries CENTURY Industries Inc.  
 5645 Royalmount Ave.  
 Montreal, Quebec, Canada H4P 2P9  
 Tel:514-842-3933 Fax:514-842-7481  
 Toll free Canada only:1-877-842-3934  
 Date:2024/03/11 Rev: 2025/04/15

Dwg. #

(yyyy/mm/dd) (yyyy/mm/dd)

**P 1/1**