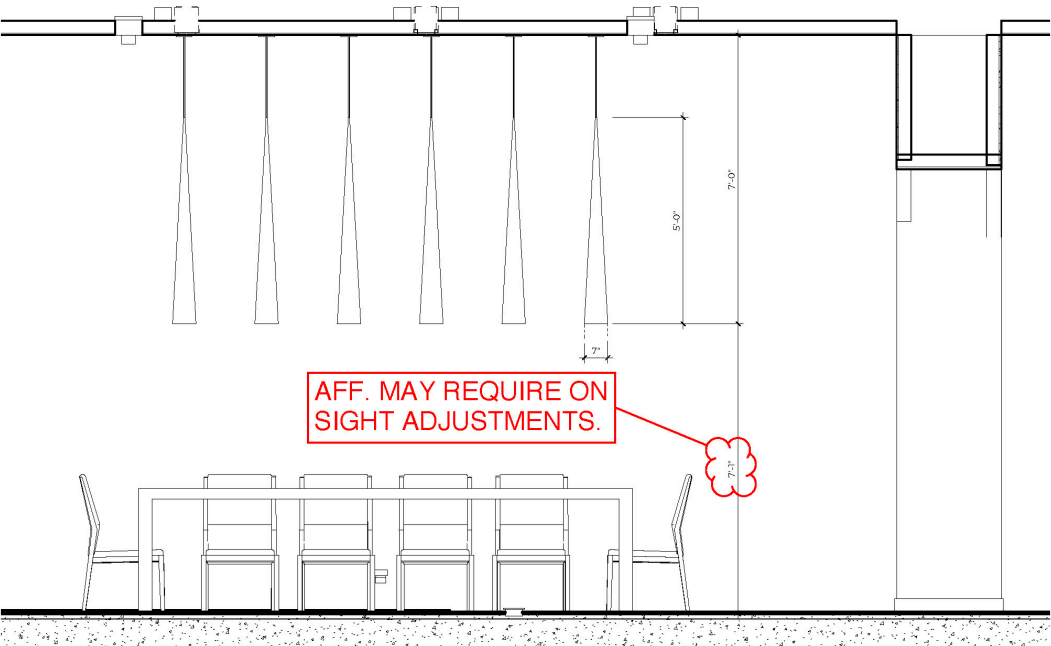




CENTURY

LIGHTING | ART | DESIGN



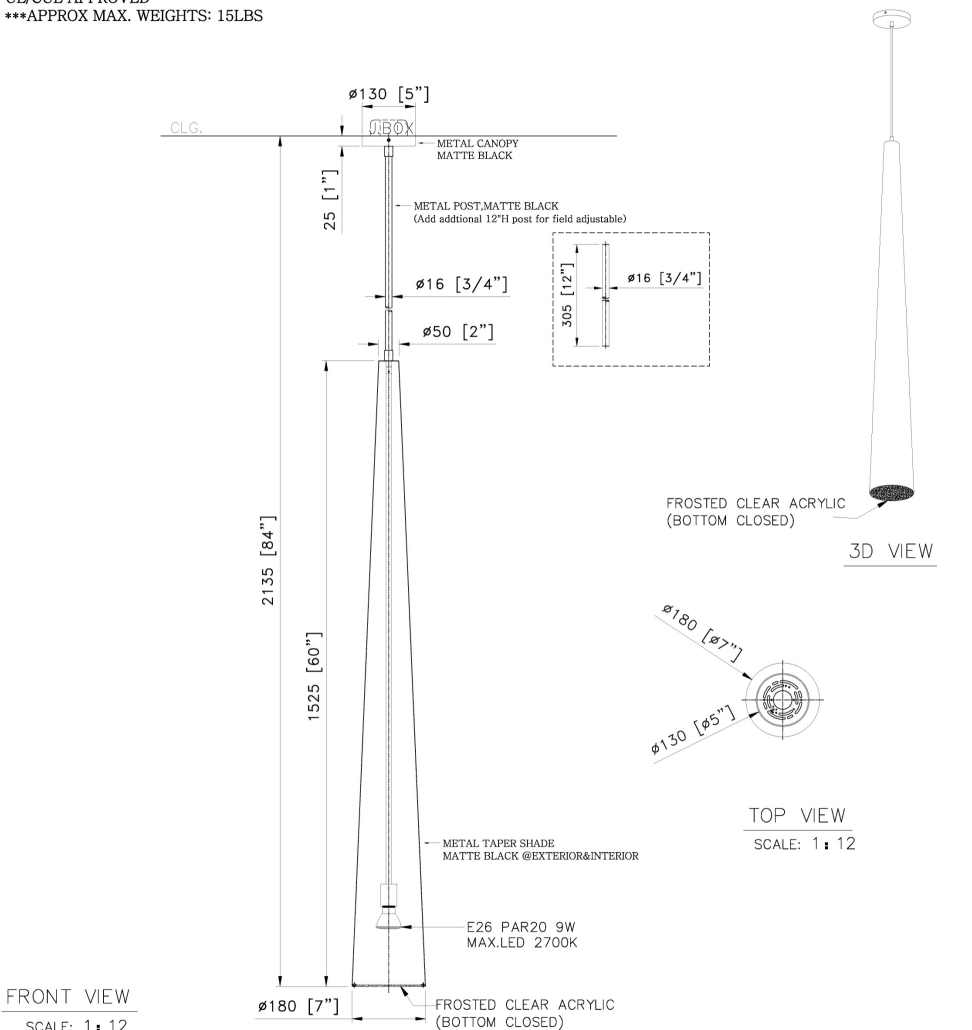


AFF. MAY REQUIRE ON SIGHT ADJUSTMENTS.

7'-3"

NOTES:

- 1) METAL: ALL EXPOSED METAL FINISH TO BE MATTE BLACK
- 2) SHADE: TAPER METAL W/ FROSTED CLEAR ACRYLIC DIFFUSER (BOTTOM).
- 3) SOCKETS: 1PC x EDISON BASE MED. 120V. A.C. 60Hz. COMPATIBLE W/ E26 PAR20 MAX. 9W LED 2700K. DIMMABLE. BULB INCLUDED
- 4) HARD WIRED
- UL/ CUL APPROVED
- *** APPROX MAX. WEIGHTS: 15LBS



CUSTOM PENDANT LIGHT **National Landing Building 1**
 ITEM NO: B1-AP9 QTY: 6X Arlington, VA

Approval: X Date: 04.18.23

With comments: _____
 CENTURY TO INCLUDE BULBS. PROVIDE FINISH SAMPLES FOR 1LD
 APPROVAL REVIEWED AS NOTED.

Signed By: JASON VALENTIN

Estimated Leads time are contingent upon receiving approved submittals and are subject to change

Les Industries CENTURY Industries Inc.
 5645 Royalmount Ave. Dwg. #
 Montreal, Quebec, Canada H4P 2P9
 Tel : 514-842-3933 Fax : 514-842-7481
 Toll free Canada only : 1-877-842-3934
 Date: 2022/11/07 Rev: 2023/03/26
 (yyyy/mm/dd) (yyyy/mm/dd)

