



CENTURY

LIGHTING | ART | DESIGN

joekrauslighting 

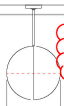
301-537-5808

joe@joekrauslighting.com

www.joekrauslighting.com

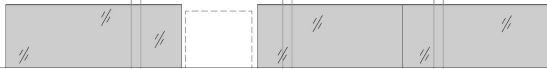


ADD ADDITIONAL 1'-0"
FOR ONSIGHT
ADJUSTMENT



2'-7"

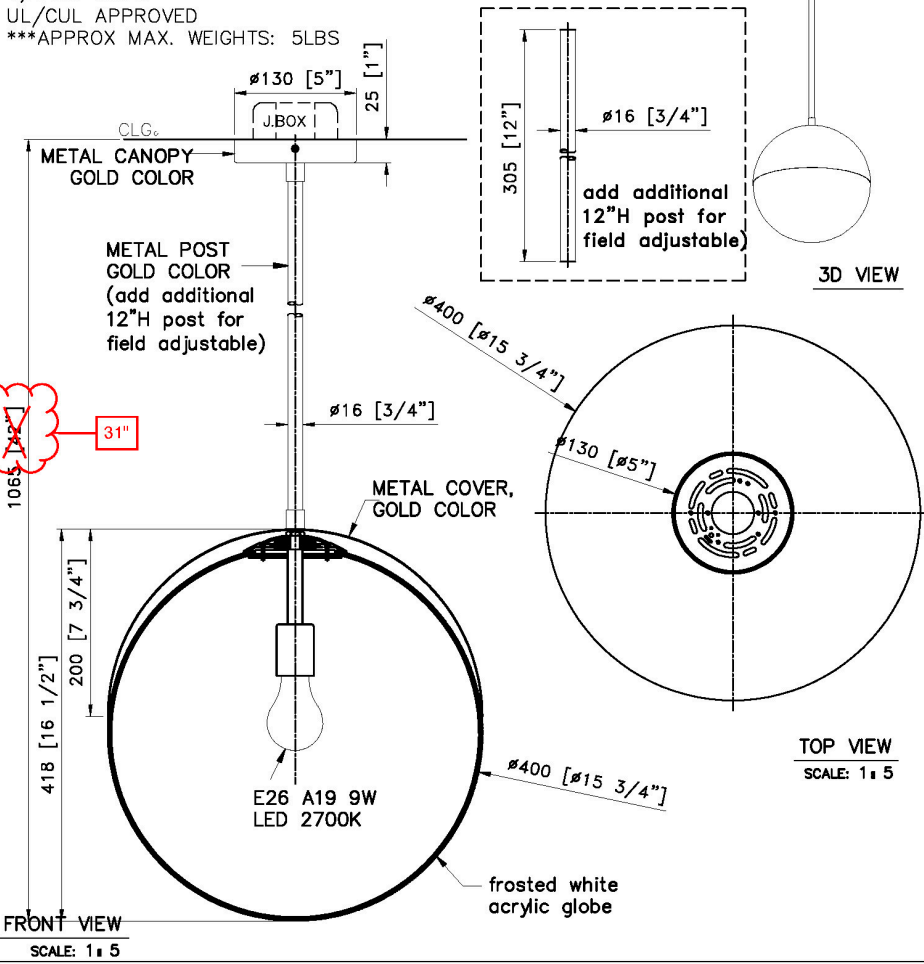
6'-5"



OPEN
THRU

NOTES:

- 1) METAL: ALL EXPOSED METAL FINISH TO BE GOLD COLOR
 - 2) SHADE: 1*FROSTED WHITE ACRYLIC GLOBE
 - 3) SOCKET: 1xEDISON BASE MED.120V.A.C.60Hz.COMPATIBLE W/E26 A19 MAX.9W LED 2700K. DIMMABLE. BULB INCLUDED
 - 4) HARD WIRED
- UL/CUL APPROVED
 ***APPROX MAX. WEIGHTS: 5LBS



CUSTOM FIXTURE PENDANT	National Landing Building 2
ITEM NO: B2-AP20 QTY: 6X	Arlington, VA
Approval: <input checked="" type="checkbox"/> Date: 04.18.23	Les Industries CENTURY Industries Inc. 5645 Royalmount Ave. Dwg. #
With comments: SUBMIT SAMPLES FOR 1LD REVIEW. APPROVED AS NOTED.	Montreal, Quebec, Canada H4P 2P9 Tel: 514-842-3933 Fax: 514-842-7481
Signed By: JASON VALENTIN	Toll free Canada only: 1-877-842-3934
Estimated Leads time are contingent upon receiving approved submittals and are subject to change	Date: 2022/11/07 Rev: 2023/03/30 (yyyy/mm/dd) (yyyy/mm/dd)



