



CENTURY

LIGHTING | ART | DESIGN

joekrauslighting 

301-537-5808

joe@joekrauslighting.com

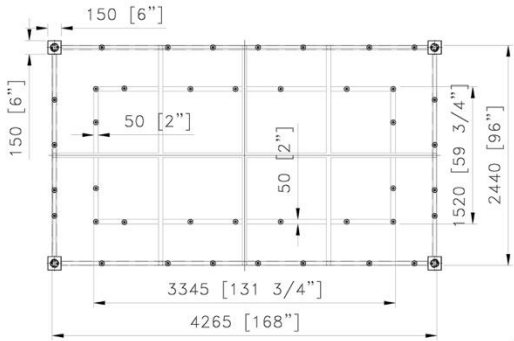
www.joekrauslighting.com



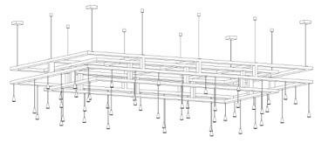


Custom 40 Light 14 x 8' Restaurant Fixture

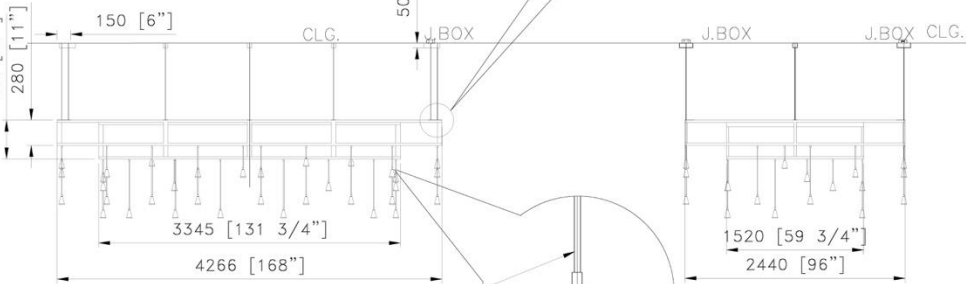
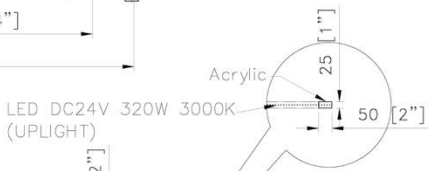
- NOTES:
 1) METAL: ALL EXPOSED METAL FINISH TO BE POWDER COATED "MATTE BLACK"
 2) SHADE/DIFFUSER: MILK WHITE ACRYLIC DIFFUSER (UP LIGHT) + 40PCS* METAL TAPER METAL SHADE (DOWN LIGHTS)
 3) LAMPING:
 A. UPLIGHT: INTEGRATED LED 320W @ RECTANGLE FRAMES, W/REMOTE DRIVER. 120V.AC. 50-60Hz
 B. DOWNLIGHT: 40PCS* GU10 LED MAX. 7.5W EA, LED 3000K. BULBS NOT INCLUDED
 4) HARD WIRED. ON-SITE ASSEMBLY REQUIRED
 UL/CUL APPROVED; APPROX MAX. WEIGHTS: 825 LBS



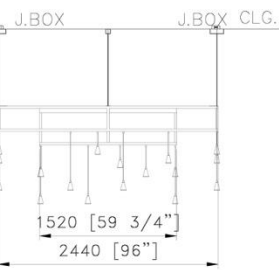
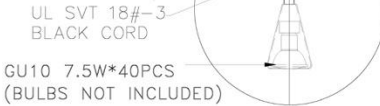
TOP VIEW
SCALE: 1: 55



3D VIEW



FRONT VIEW
SCALE: 1: 55



SIDE VIEW
SCALE: 1: 55

CUSTOM CEILING FIXTURE@RESTAURANT

ITEM NO: K23 QTY: 2X

Approval: Date: _____
 With comments: _____

Signed By: _____
 Estimated Lead time are contingent upon receiving approved submittals and are subject to change

BRIGHTVIEW

HUNT VALLEY, MD

Les Industries CENTURY Industries Inc.
 5645 Royalmount Ave. Dwg. #
 Montreal, Quebec, Canada H4P 2P9
 Tel: 514-842-3933 Fax: 514-842-7481
 Toll free Canada only: 1-877-842-3934
 Date: 2021/05/02 Rev: 2021/06/20
 (yyyy/mm/dd) (yyyy/mm/dd)

