



CENTURY

LIGHTING | ART | DESIGN

joekrauslighting

301-537-5808

joe@joekrauslighting.com

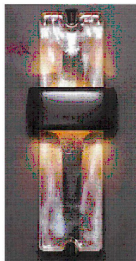
www.joekrauslighting.com



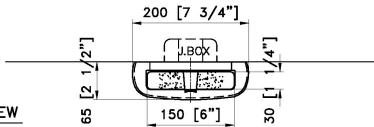


NOTES:

- 1)METAL: ALL EXPOSED METAL FINISH TO BE AGED BRASS TO MATCH DESIGNER SAMPLE
- 2)SHADE: CLEAR TEXTURED GLASS.
- 3)LAMPING: INTEGRATED LED 6W 2700K.NON DIMMABLE.W/DRIVER@J-BOX,
- 120V.A.C.60Hz
- 4)HARD WIRED. SUITABLE FOR INDOOR(DRY)LOCATION USE
- UL/CUL APPROVED
- ***APPROX MAX. WEIGHTS: 8LBS

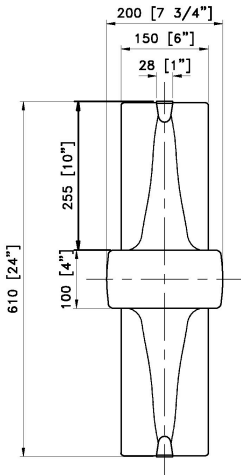


INSPIRATION IMAGE



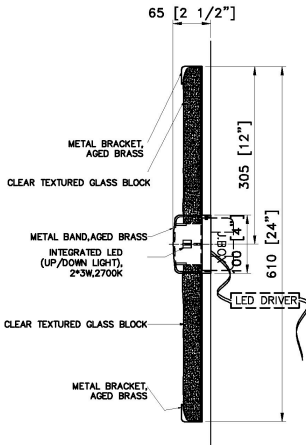
TOP VIEW

SCALE: 1:6



FRONT VIEW

SCALE: 1:6



SIDE VIEW

SCALE: 1:6

<p>CUSTOM WALL SCONCE® AUTO LOBBY</p> <p>ITEM NO:LT-1401 QTY: 2 PCS</p> <p>Approval: <input type="checkbox"/> _____</p> <p>With comments: _____</p> <p>_____</p> <p>Signed By: _____</p> <p>Estimated Leads time are contingent upon receiving approved submittals and are subject to change</p>	<p>DOUBLETREE — CENTER CITY PHILADELPHIA, PA</p> <p>Les Industries CENTURY Industries Inc. 5645 Royalmount Ave. Dwg.# Montreal, Quebec, Canada H4P 2P9 Tel: 514-842-3933 Fax: 514-842-7481 Toll free Canada only: 1-877-842-3934 Date: 2025/08/01 Rev: _____ (yyyy/mm/dd) (yyyy/mm/dd)</p>
---	---

