

Brightview Hunt Valley



Custom 60" Lobby Sconce/Pendants

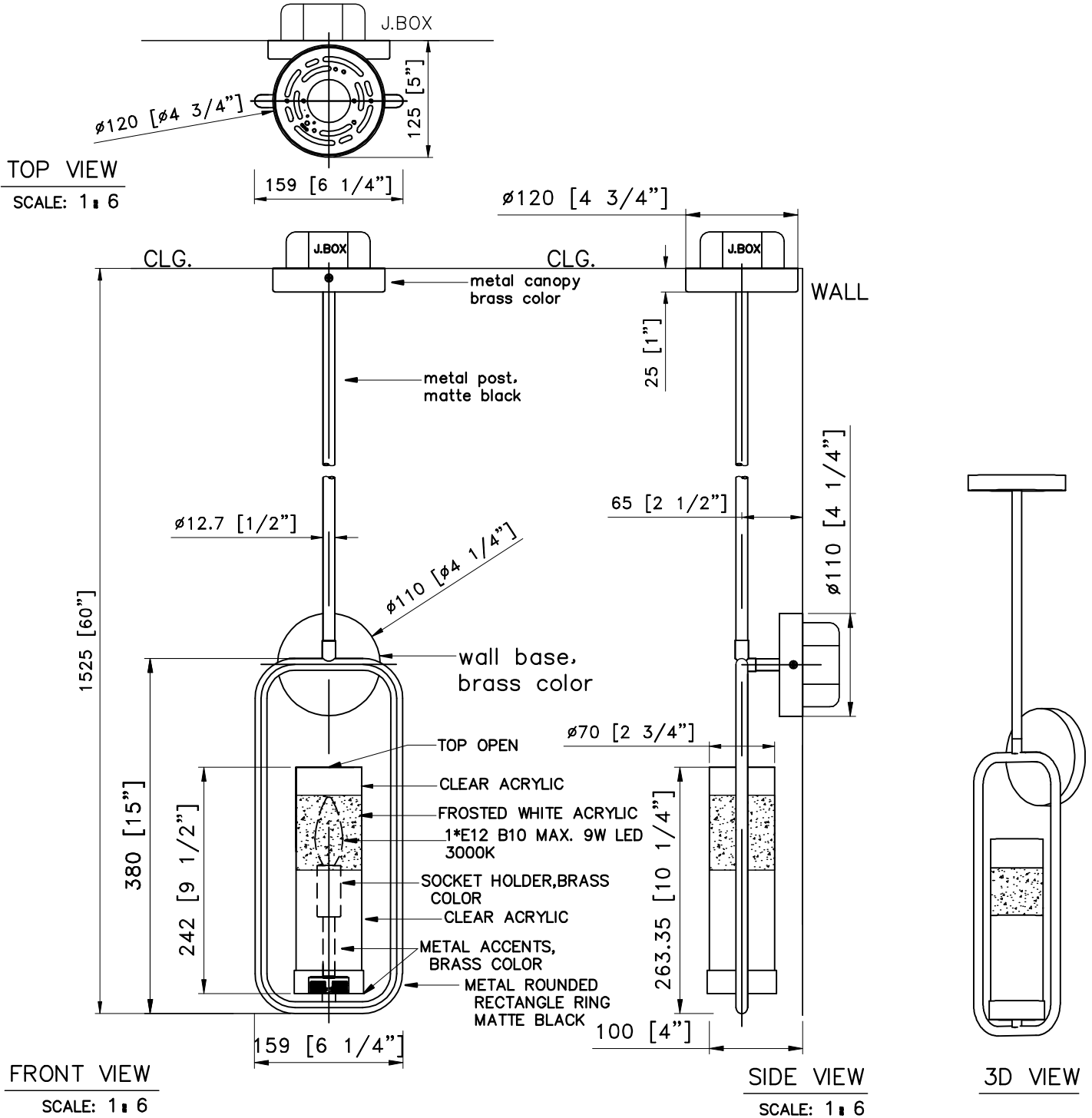


4

★G  
1

NOTES:

- 1) METAL: ALL EXPOSED METAL FINISH TO BE MATTE BLACK W/BRASS COLOR METAL ACCENTS
- 2) SHADE: CLEAR ACRYLIC CYLINDER W/MIDDLE FROSTED WHITE.
- 3) SOCKET: 1x CANDELABRA BASE. 120V. A.C. 50-60Hz. COMPATIBLE W/E12 B10 MAX. 9W EA 3000K. DIMMABLE. BULB NOT INCLUDED
- 4) HARD WIRED; UL/CUL APPROVED
- \*\*\*APPROX MAX. WEIGHT: 14LBS



**Custom PENDANT LIGHT**

ITEM NO: J3 QTY: 4pcs

Approval:  Date: \_\_\_\_\_

With comments: \_\_\_\_\_

Signed By: \_\_\_\_\_

Estimated Leads time are contingent upon receiving approved submittals and are subject to change

**BRIGHTVIEW**

HUNT VALLEY, MD

Les Industries CENTURY Industries Inc.

5645 Royalmount Ave.

Montreal, Quebec, Canada H4P 2P9

Tel: 514-842-3933 Fax: 514-842-7481

Toll free Canada only: 1-877-842-3934

Date: 2021/05/02 Rev: 2021/06/20

(yyyy/mm/dd)

(yyyy/mm/dd)

Dwg. #

P 1/1