







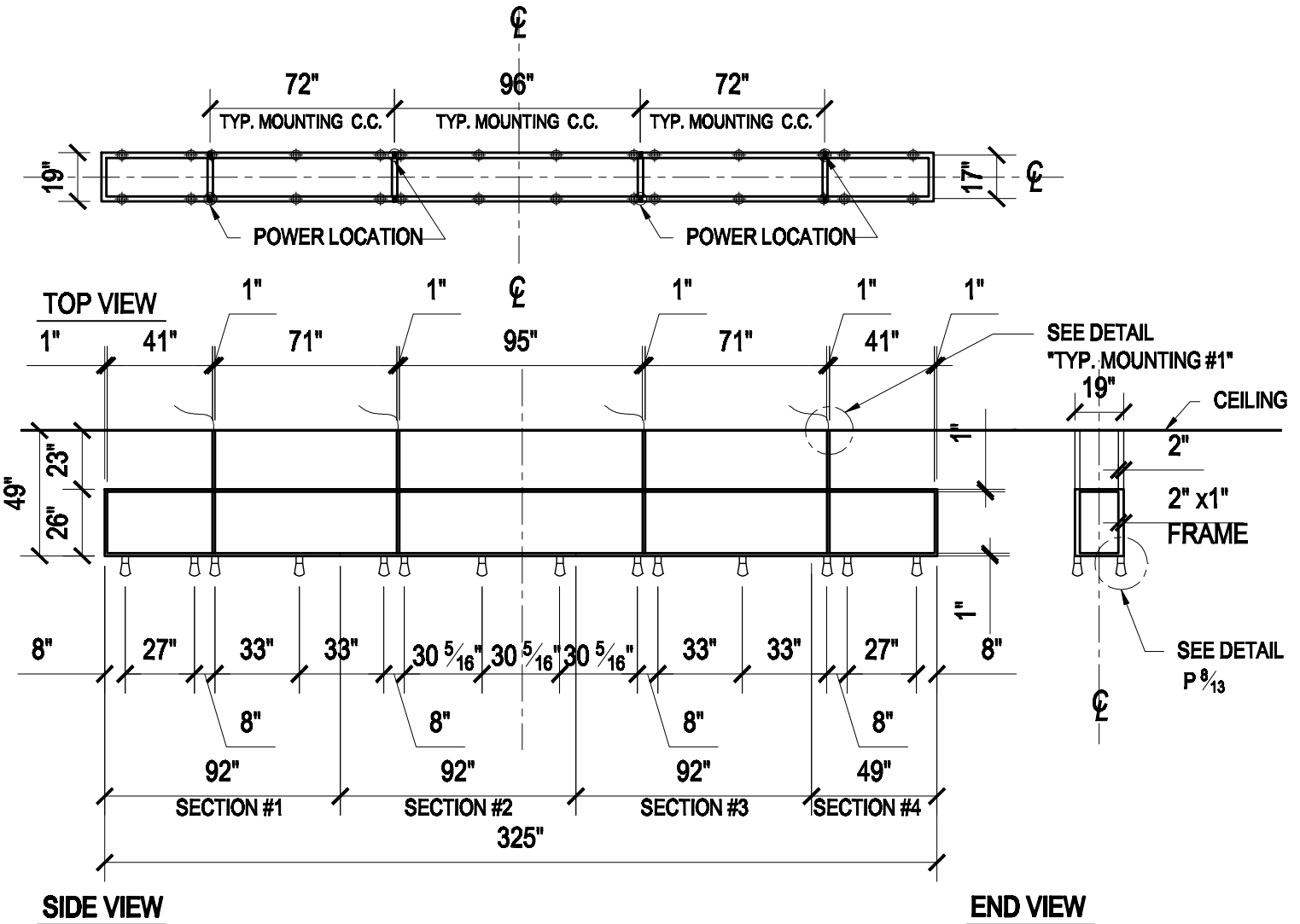


*ON SITE ASSEMBLY REQUIRED.
 FABRICATED IN 4 SECTIONS.

4x POWER WHIPS OR J.BOXES REQUIRED BY OTHERS.

NOTES:

- 1) **METAL:** ALL EXPOSED METAL TO MATCH "CA-MT-01/AMMT-01" FINISH.
- 2) **SHADE:** 28x "INTERIOR FROSTED LUCITE, LASER ETCHED FILAMENT".
- 3) **SOCKETS:** 28x LED G9, 3000K, DIMMABLE 0-10V.
 HARDWIRED, 120V.
 *(+ADDITIONAL 28x BULBS PER ATTIC STOCK)
 UL/CSA APPROVED.
 APPROX MAX WEIGHT: 330LBS.



CUSTOM FIXTURE "A" @ DEMO KITCHEN

MODEL NO.: FIXT A **QTY:** 1x

Approval: [Signature] **Date:** Sept. 23rd 2021

With comments: via email -Jeremy Zelinger

Signed By: _____

Estimated Leads time are contingent upon receiving approved submittals and are subject to change.

1000 SOUTH CAPITOL ST.

WASHINGTON, DC.

Les Industries CENTURY Industries Inc.
 5645 Royalmount Ave.

Montreal, Quebec, Canada H4P 2P9

tel: 514-842-3933 fax: 514-842-7481

Toll free Canada only : 1-877-842-3934

Date: 2020/12/22 rev: 2021/03/19

(yyyy/mm/dd)

(yyyy/mm/dd)

Dwg.#

P 1/13

CENTURY

Lighting

joekrauslighting 

301-537-5808

joe@joekrauslighting.com

www.joekrauslighting.com