

joe kraus lighting 

Fall 2025

Made to Order

joe kraus lighting



301-537-5808

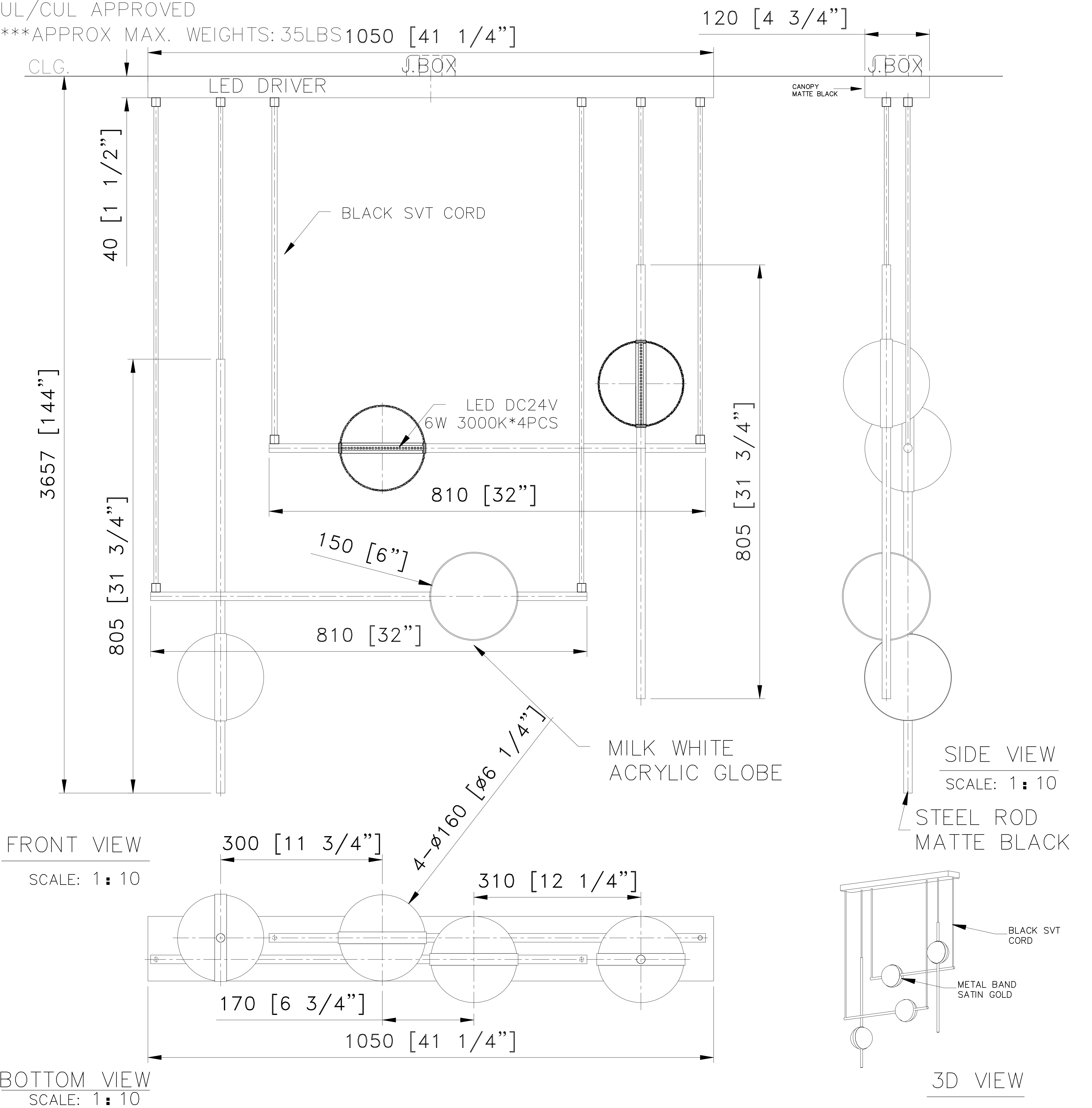
joe@joe kraus lighting.com

www.joe kraus lighting.com



Brightview Senior Living - Dining Room- Alexandria

NOTES:
1)METAL: ALL EXPOSED METAL FINISH TO BE POWDER COATED "MATTE BLACK" +SATIN GOLD BAND@ACRYLIC GLOBE
2)SHADE: 4* MILK WHITE ACRYLIC GLOBE
3)LAMPING:INTEGRATED LED 24W LED 3000K. DIMMABLE. W/DRIVER@CANOPY
4)HARD WIRED. 120V.A.C. 60Hz
UL/CUL APPROVED
***APPROX MAX. WEIGHTS: 35LBS



CUSTOM FIXTURE@DINING ROOM

ITEM NO: K14 QTY: 3PCS

Brightview Senior Living

Alexandria, VA

Approval: ☐ Date: _____

With comments: _____

Signed By: _____

Estimated Leads time are contingent upon receiving approved submittals and are subject to change

Les Industries CENTURY Industries Inc.

5645 Royalmount Ave.

Montreal, Quebec, Canada H4P 2P9

Tel: 514-842-3933 Fax: 514-842-7481

Toll free Canada only: 1-877-842-3934

Date: 2022/09/26 Rev: 2023/08/30

(yyyy/mm/dd)

(yyyy/mm/dd)

Dwg. #

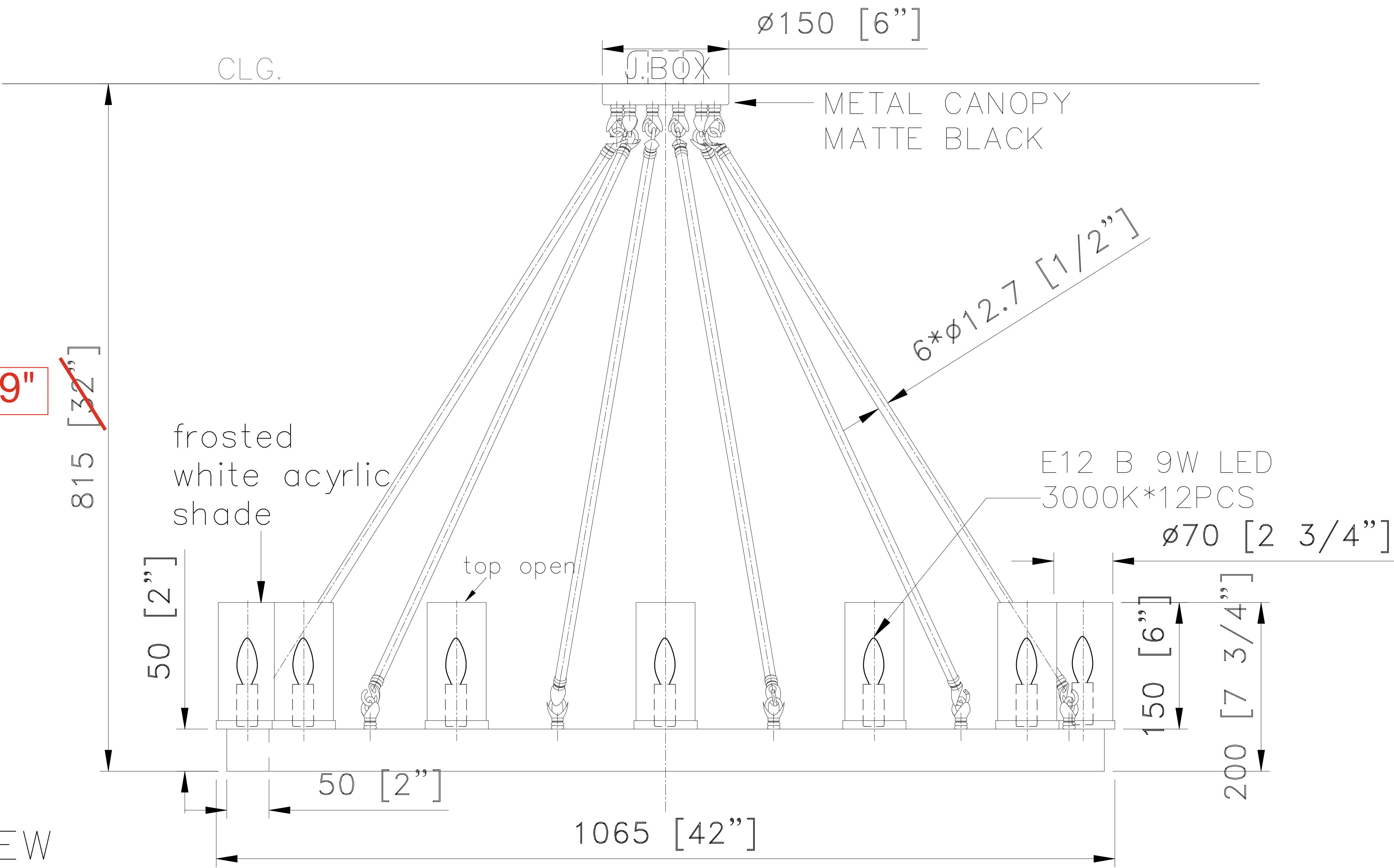
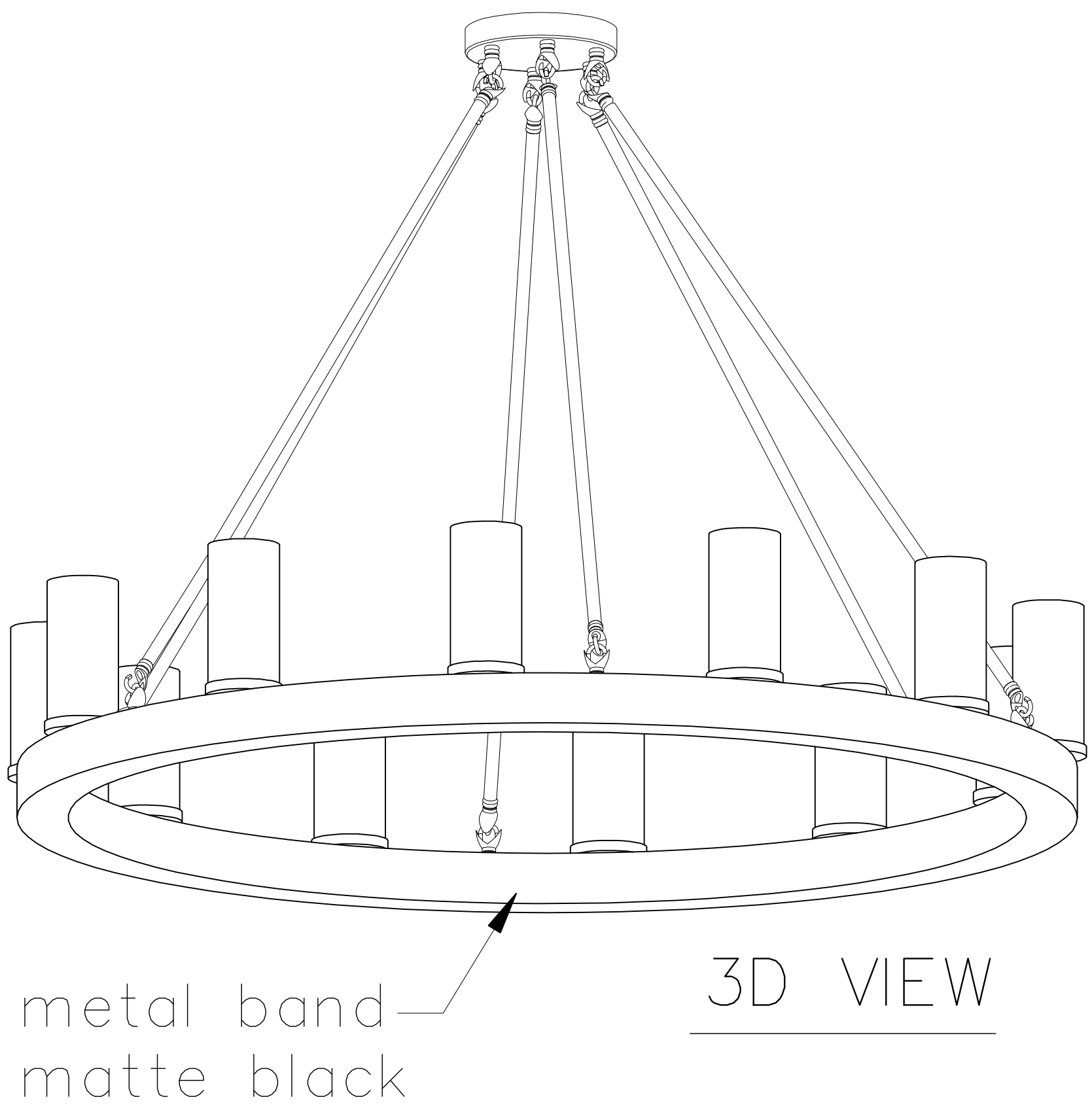
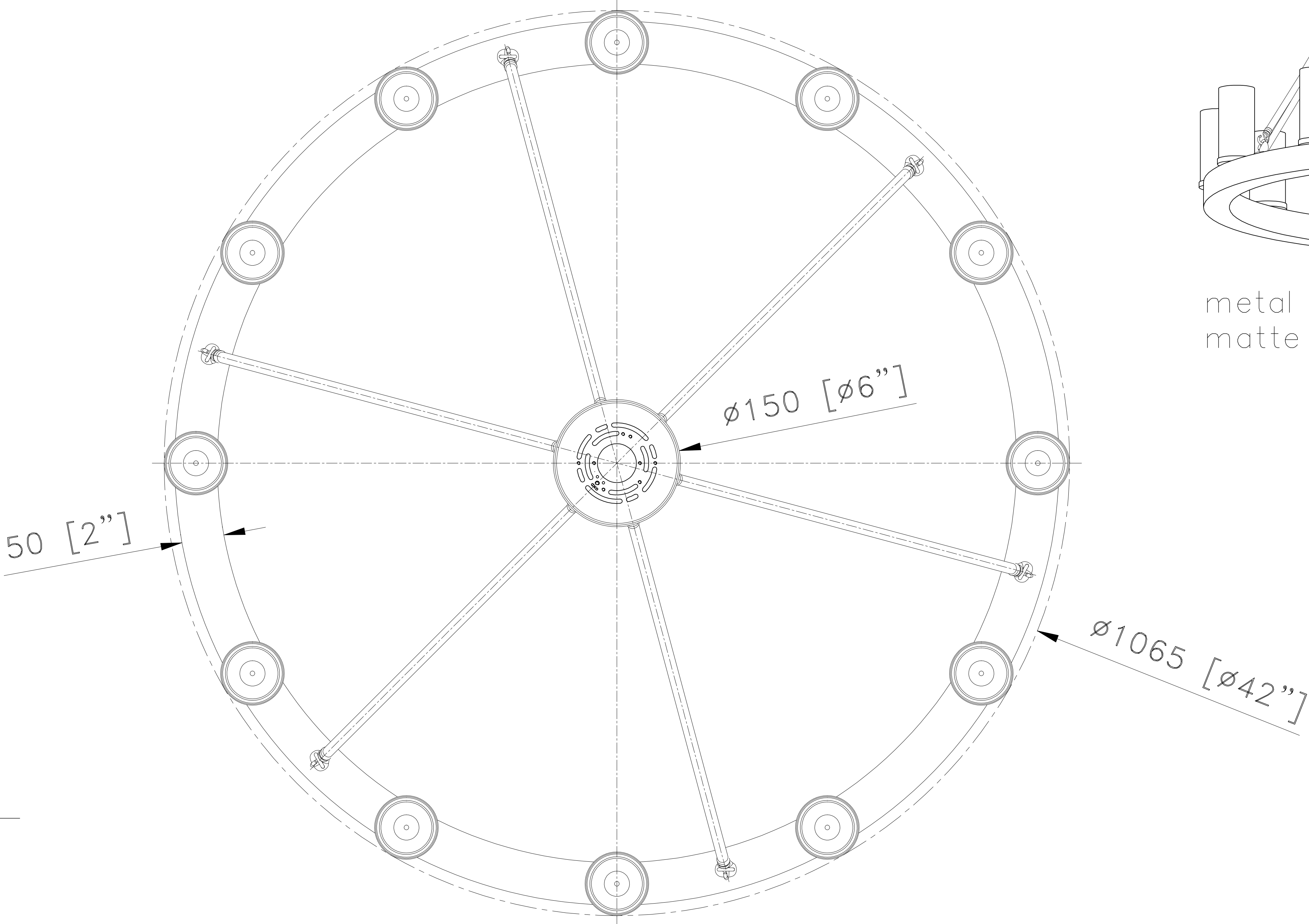
P 1/1



Brightview Lobby – Alexandria by Century Lighting

NOTES:

- 1)METAL: ALL EXPOSED METAL FINISH TO BE POWDER COATED "MATTE BLACK"
 - 2)SHADE: 12*FROSTED CLEAR WHITE CYLINDERS
 - 3)SOCKET: 12*CANDELABRA BASE, 120V.A.C. 60Hz,COMPATIBLE W/E12 B10 MAX.9W EA LED. 3000K. DIMMABLE.BULB NOT INCLUDED
 - 4)HARD WIRED.
- UL/CUL APPROVED
- ***APPROX MAX. WEIGHTS: 45LBS



CUSTOM CHANDELIER@MAIN LOBBY/LIVING ROOM

ITEM NO: K1 QTY:3PCS

Approval: ☒ Date: 02.13.25

With comments: Overall height to be 29"

Signed By: Amanda Dawson (Aumen Asner)

Estimated Leads time are contingent upon receiving approved submittals and are subject to change

Brightview Senior Living

Alexandria, VA

Les Industries CENTURY Industries Inc.

5645 Royalmount Ave.

Montreal, Quebec, Canada H4P 2P9

Tel:514-842-3933 Fax:514-842-7481

Toll free Canada only:1-877-842-3934

Date:2022/09/26 Rev: 2025/02/07

(yyyy/mm/dd)

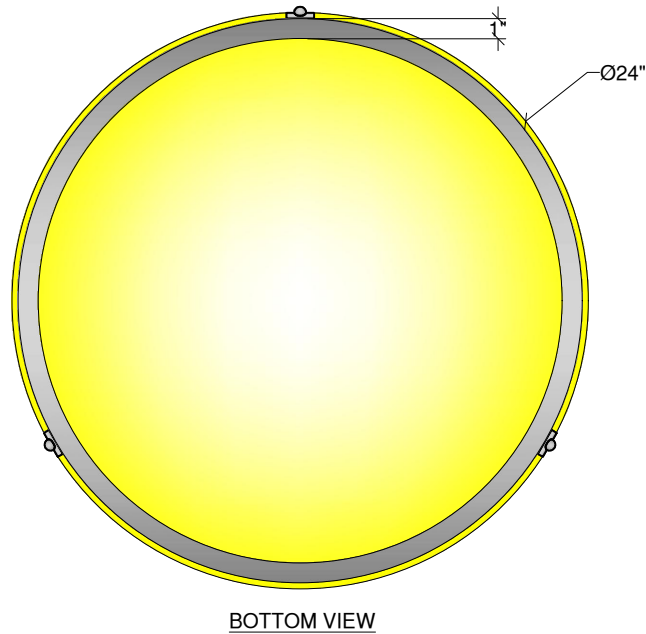
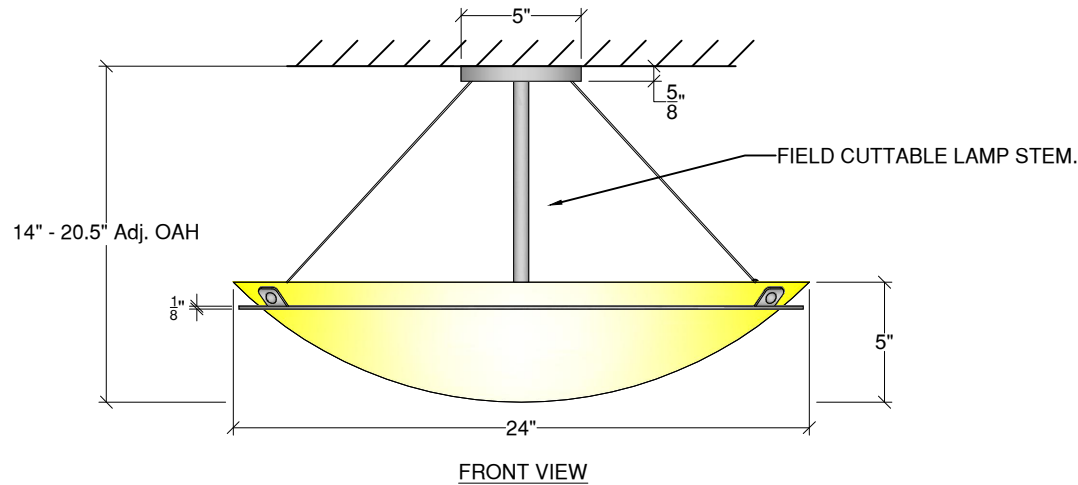
(yyyy/mm/dd)

Dwg. #

P 1/1



Silver Diner -Springfiled – by UltraLights



Specifications

Description:

Modified 9925-24 Compass cable hung pendant with $\frac{1}{8}$ " thick metal ring.

Dimensions:

Approx.

24"dia. x 5"d body x 14" - 20.5" OAH with field cuttable lamp stem.

Lamping:

4 x E26 for LED retrofit 20w max, WRL, 120 volt lamping for dry locations. Lamps not included.

Diffuser:

Opal Acrylic Diffuser

Finish:

Standard Powder coat finish

Note

UltraLights reserves the right to change specifications as necessary at any time without prior notice.

Approved by: _____ Date: _____

project name / location:

Silver Diner

specifier name / location:

Joe Kraus Lighting

quote #: 25-051

date: 3/26/2025 2:31 PM

scale: 1-1/2" = 1'-0"

rev: -

drawn by: RTS



Copyright © 2023 UltraLights Architectural Lighting, Inc.

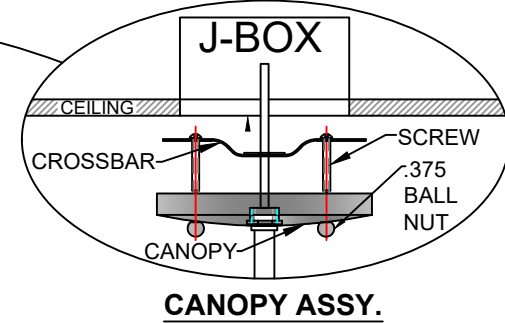
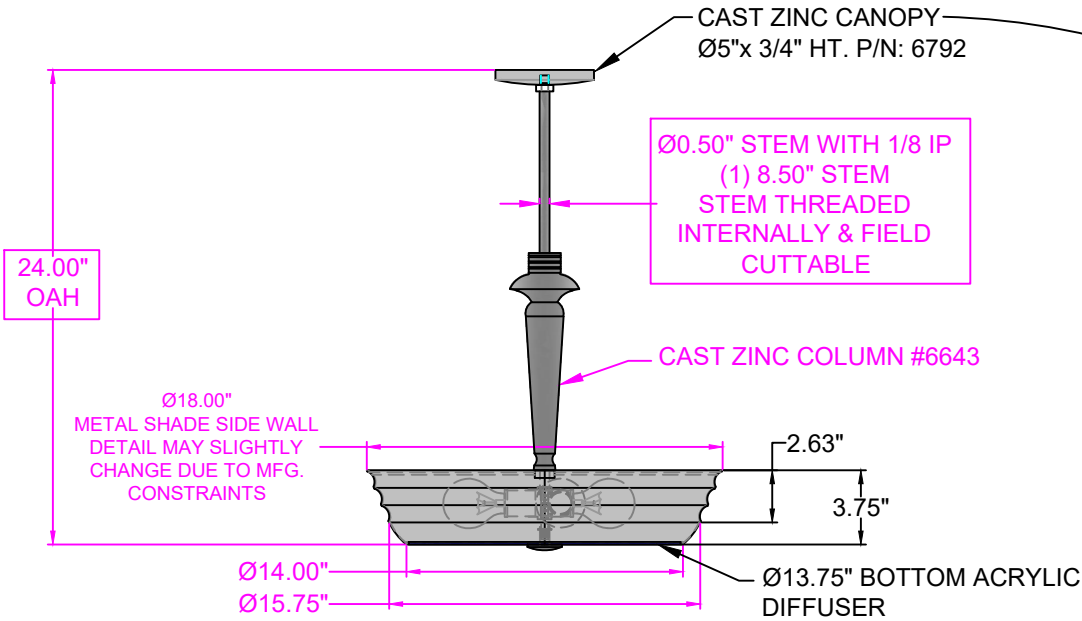
All designs presented here are exclusive property of Ultralights Architectural Lighting, Inc. and protected by U.S. and international copyright laws. You may not copy, reproduce or manufacture these copyrighted designs without permission from Ultralights Architectural Lighting, Inc.



Silver Diner Springfield – by LiteTops

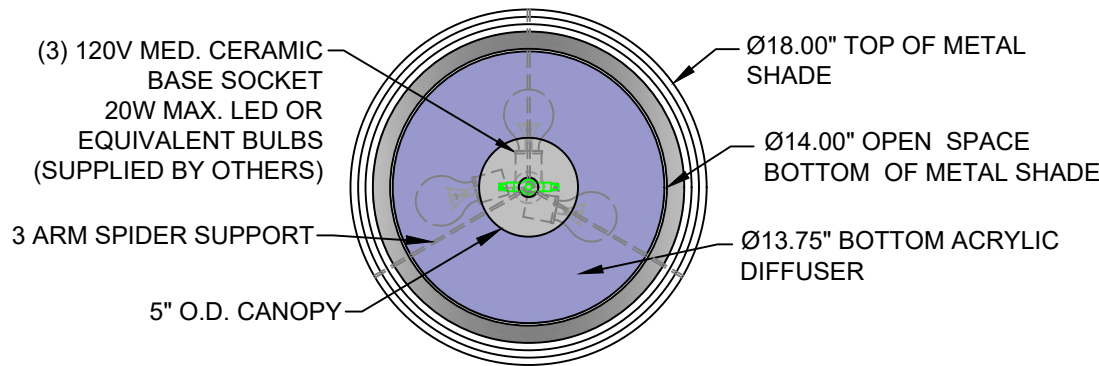


Silver Diner Springfiled – by LiteTops



NOTES:

- 1 LITETOP RESERVES THE RIGHTS TO MAKE MINOR CHANGES TO THIS DRAWING AS REQUIRED BY PRODUCTION CONSTRAINTS.



VIEW "A"-A"



1233 WEST ST. GEORGES AVE.
LINDEN, NJ 07036
908-925-7500 FAX: 908-925-9240

CUSTOMER: MARK RUSSELL @ SILVER BRANDS
JOB NAME: SILVER DINER SPRINGFIELD
SHADE: 18"DIA. x 24"HT. CUSTOM
FABRIC: METAL
FINISH: SILVER PRISMATIC

REF#

PO:

UNITS: 66

DRAWN: BIPIN

DATE: 4/3/2025

CHECK PC

APPR. PC

ISSUED

REV. DATE: 4/11/2025

CUSTOM Ø18.00"
DOM PENDING

SIZE
A

DWG NO.

5040

REV
2

SCALE -

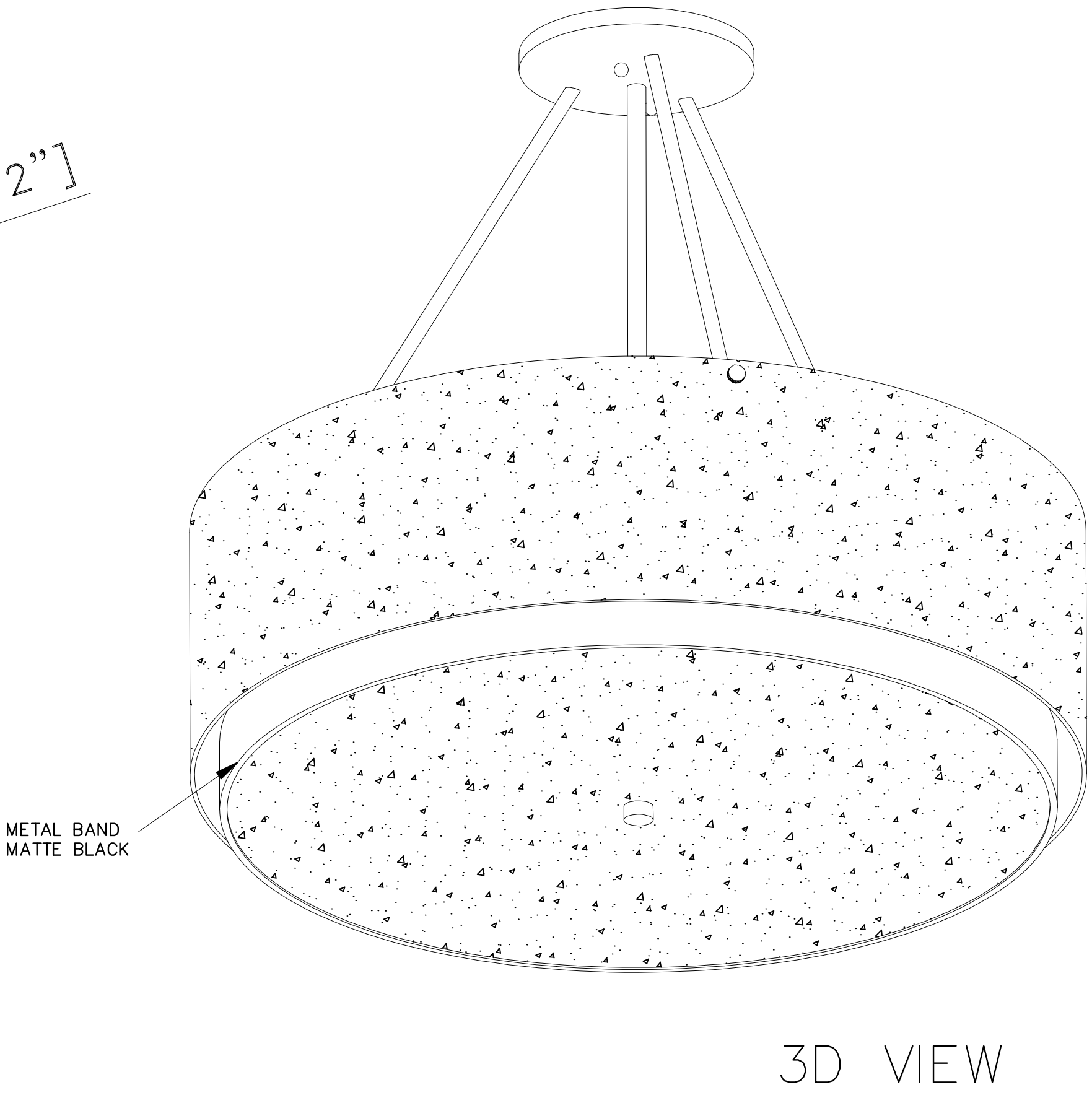
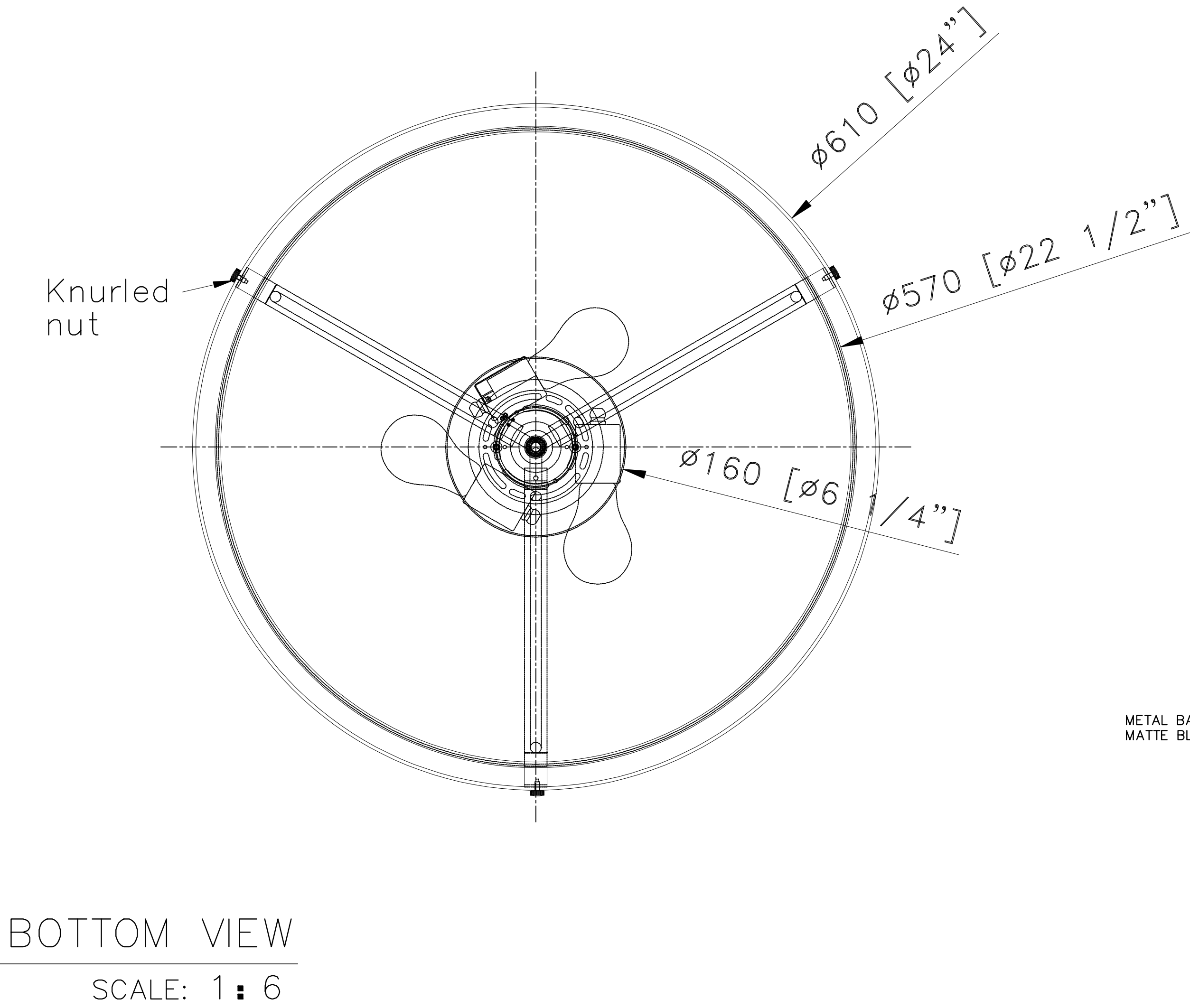
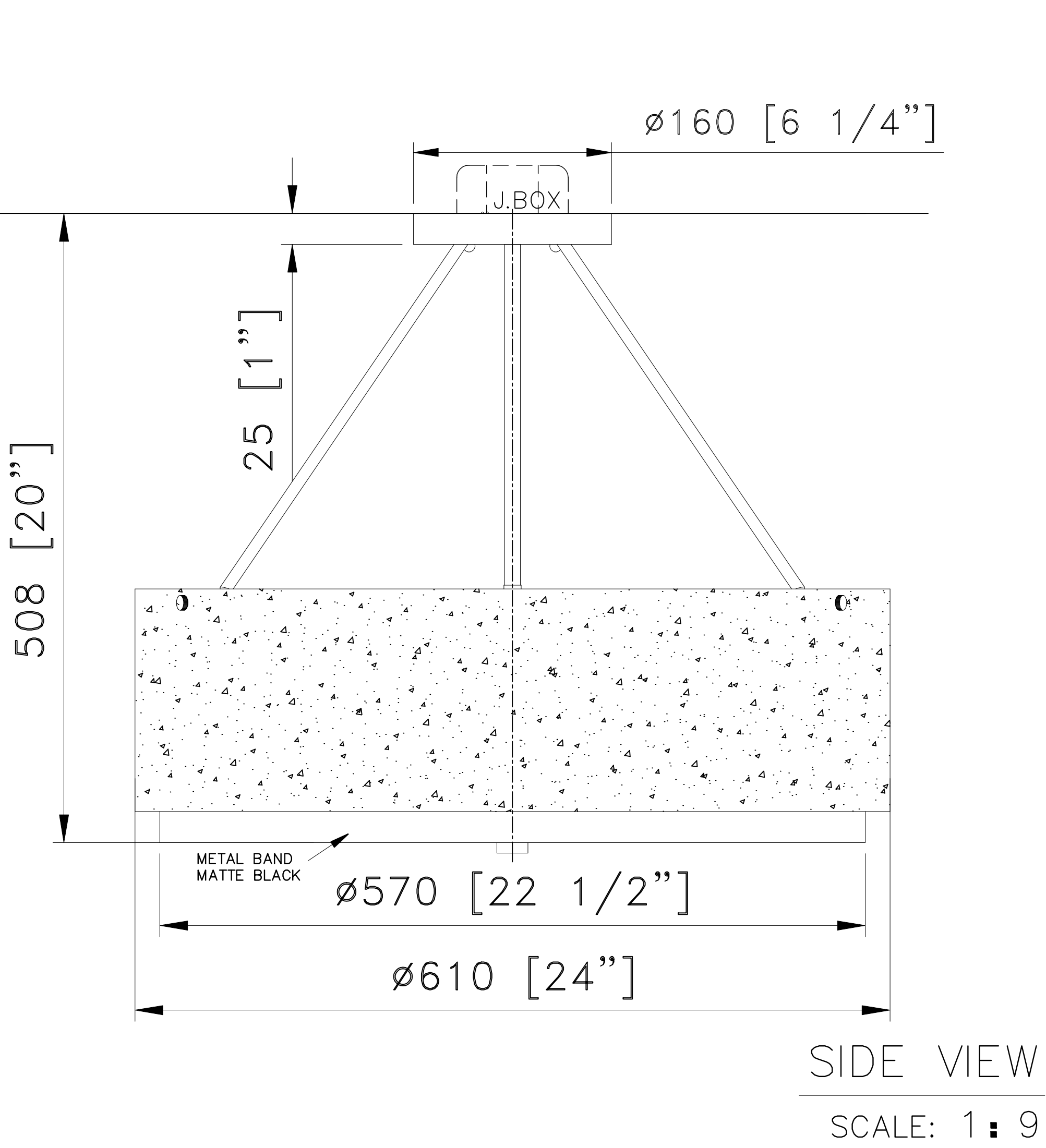
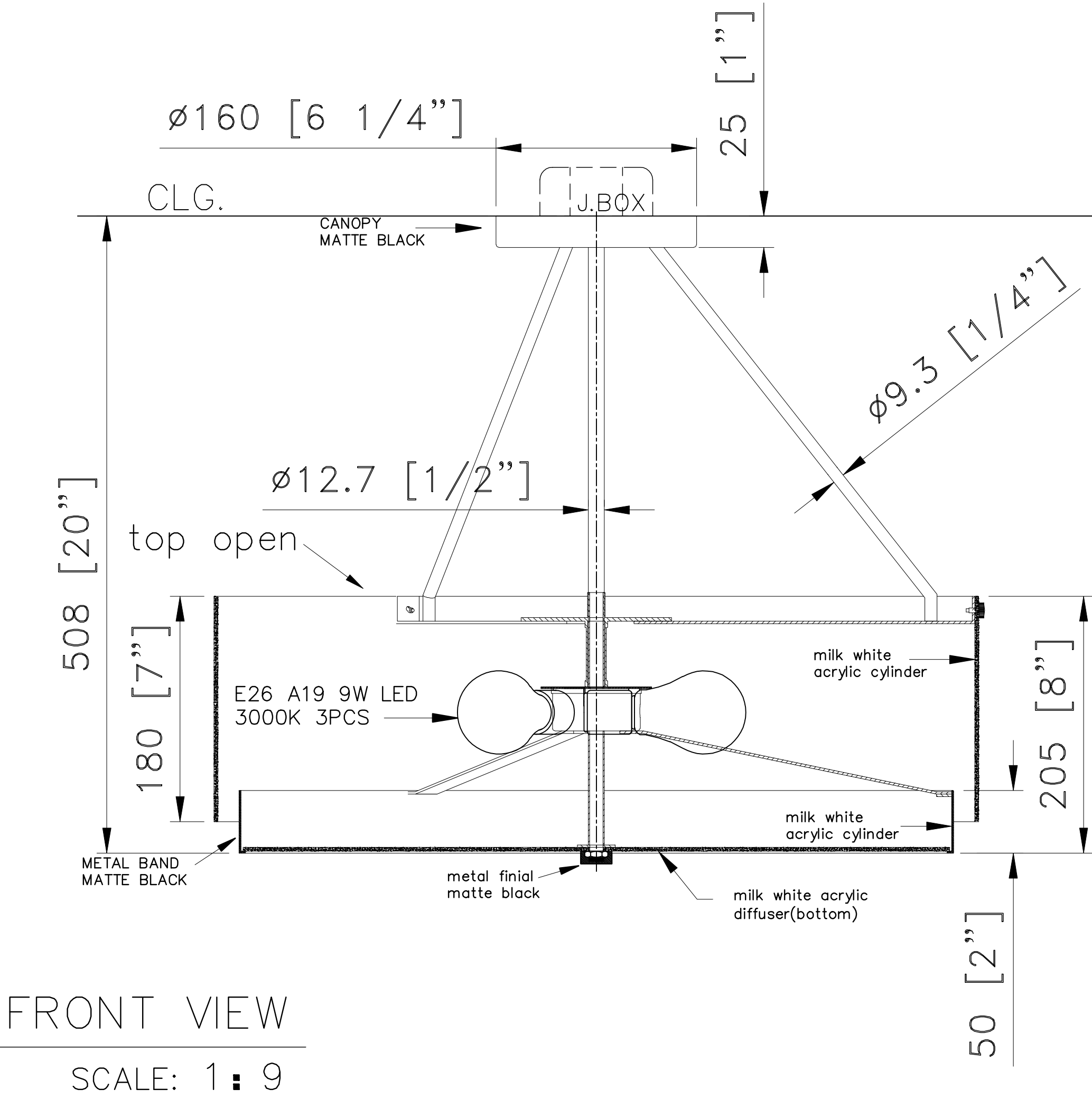
SHEET: 10F1

THE INFORMATION CONTAINED IN THIS DRAWING IS THE SOLE PROPERTY OF CUTTING EDGE INDUSTRIES. ANY REPRODUCTION IN PART OR WHOLE WITHOUT THE WRITTEN PERMISSION OF CUTTING EDGE INDUSTRIES WILL BE SUBJECT TO LEGAL PROSECUTION.



Brightview Corrodors – Alexandria - by Century Lighting

NOTES:
1)METAL: ALL EXPOSED METAL FINISH TO BE POWDER COATED MATTE BLACK
2)SHADE: TWO-TIER MILK WHITE ACRYLIC DRUM.
3)SOCKET: 3xEDISON BASE MED.120V.AC.60Hz. W/SATCO S12427 E26 A19 11W EA LED 3000K,DIMMABLE, BULBS NOT INCLUDED
4)HARD WIRED.
UL/CUL APPROVED
***APPROX MAX. WEIGHTS: 9LBS



CUSTOM FIXTURE@ELEVATOR LOBBIES 1ST-3RD FLOORS
ITEM NO:K9 QTY:11 PCS

Approval: ☐ Date: _____
With comments: _____

Signed By: _____

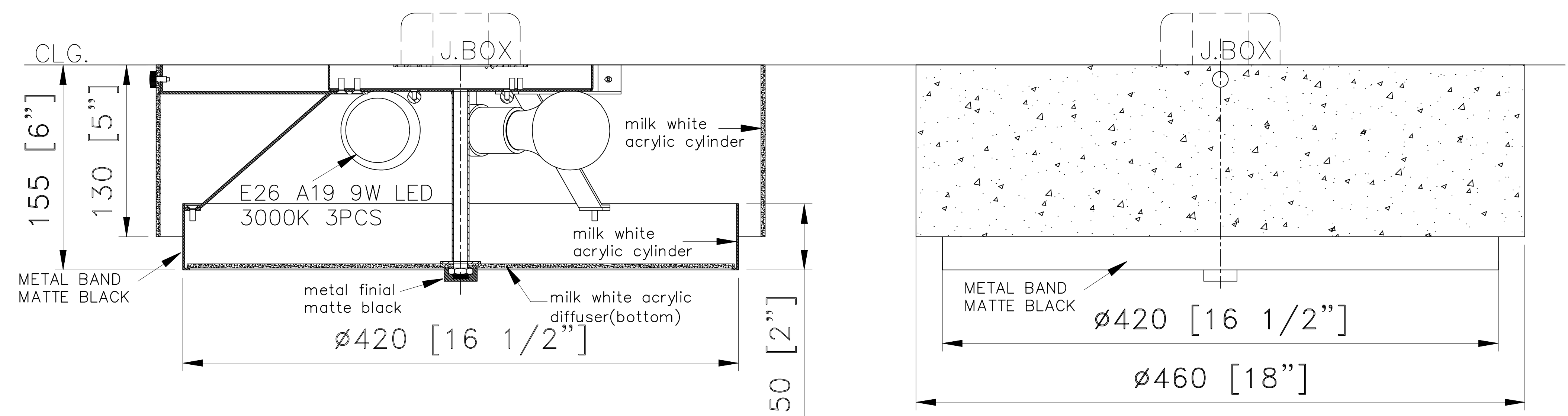
Estimated Leads time are contingent upon receiving approved submittals and are subject to change

Brightview Senior Living
Alexandria, VA

Les Industries CENTURY Industries Inc.
5645 Royalmount Ave. Dwg. #
Montreal, Quebec, Canada H4P 2P9
Tel:514-842-3933 Fax:514-842-7481
Toll free Canada only:1-877-842-3934
Date:2022/09/26 Rev: 2023/02/06
(yyyy/mm/dd) (yyyy/mm/dd)

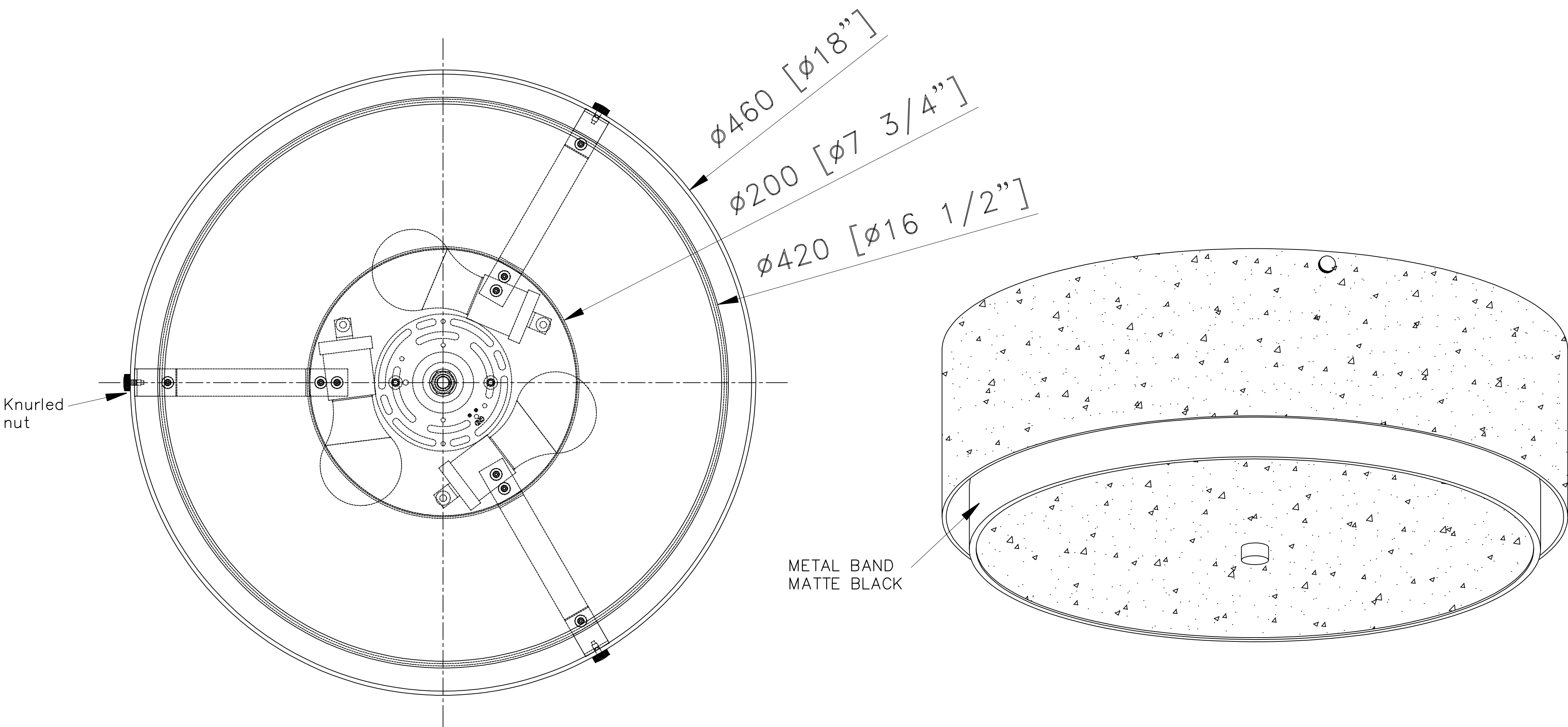


NOTES:
1)METAL: ALL EXPOSED METAL FINISH TO BE POWDER COATED MATTE BLACK
2)SHADE: TWO-TIER MILK WHITE ACRYLIC DRUM.
3)SOCKET: 3xEDISON BASE MED.120V.AC. 60Hz. W/SATCO S12427 E26 A19 11W EA LED 3000K,DIMMABLE, BULBS NOT INCLUDED
4)HARD WIRED.
UL/CUL APPROVED
***APPROX MAX. WEIGHTS: 9LBS



FRONT VIEW
SCALE: 1 : 6

SIDE VIEW
SCALE: 1 : 6



BOTTOM VIEW
SCALE: 1 : 6

3D VIEW

CUSTOM FLUSHMOUNT@CORRIDORS
ITEM NO:H2 QTY:87PCS

Brightview Senior Living
Alexandria, VA

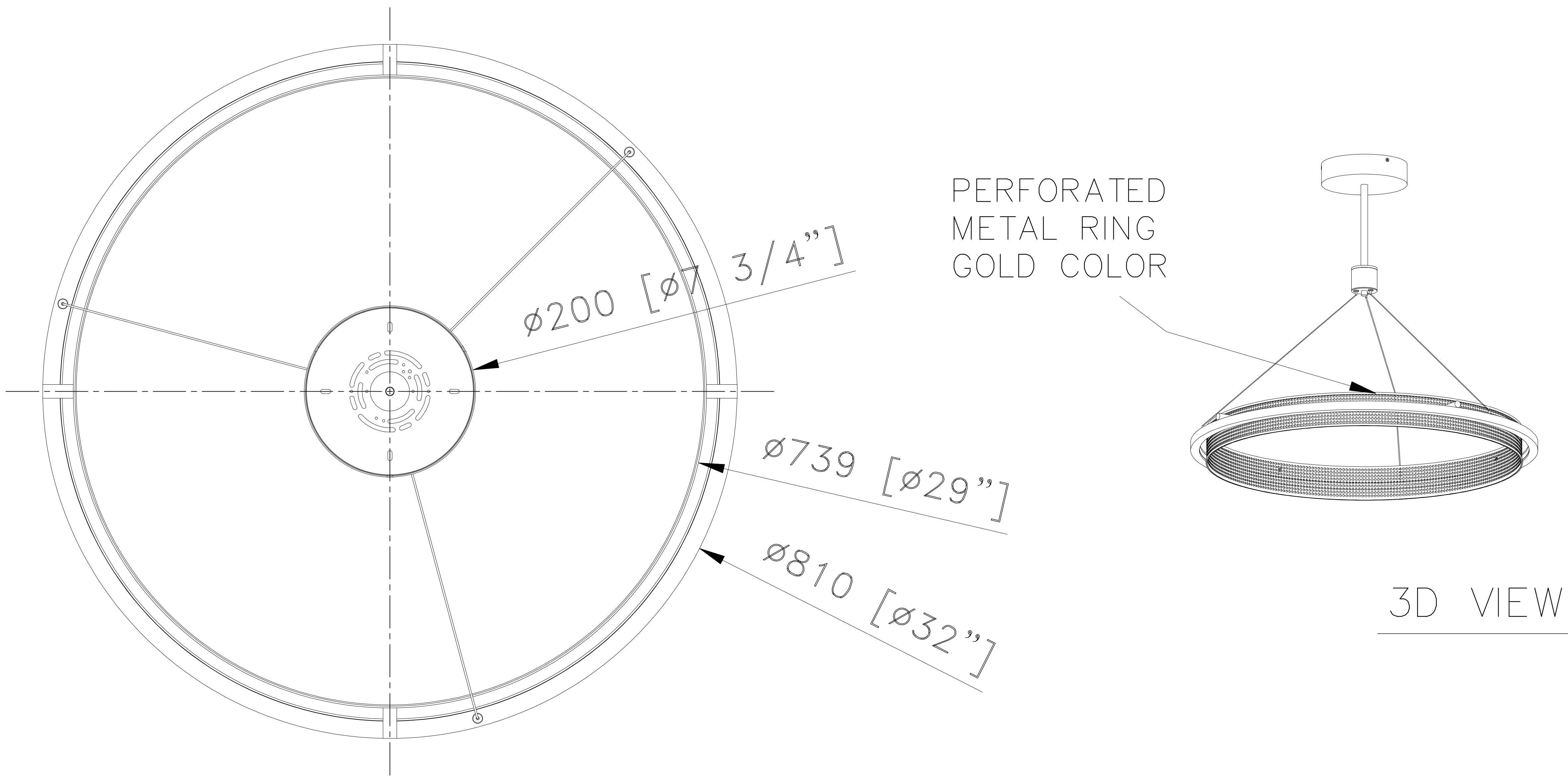
Approval: ☐ Date: _____
With comments: _____

Signed By: _____
Estimated Leads time are contingent upon receiving approved submittals and are subject to change

Les Industries CENTURY Industries Inc.
5645 Royalmount Ave. Dwg. #
Montreal, Quebec, Canada H4P 2P9
Tel:514-842-3933 Fax:514-842-7481
Toll free Canada only:1-877-842-3934
Date:2022/09/26 Rev:2023/02/06
(yyyy/mm/dd) (yyyy/mm/dd)

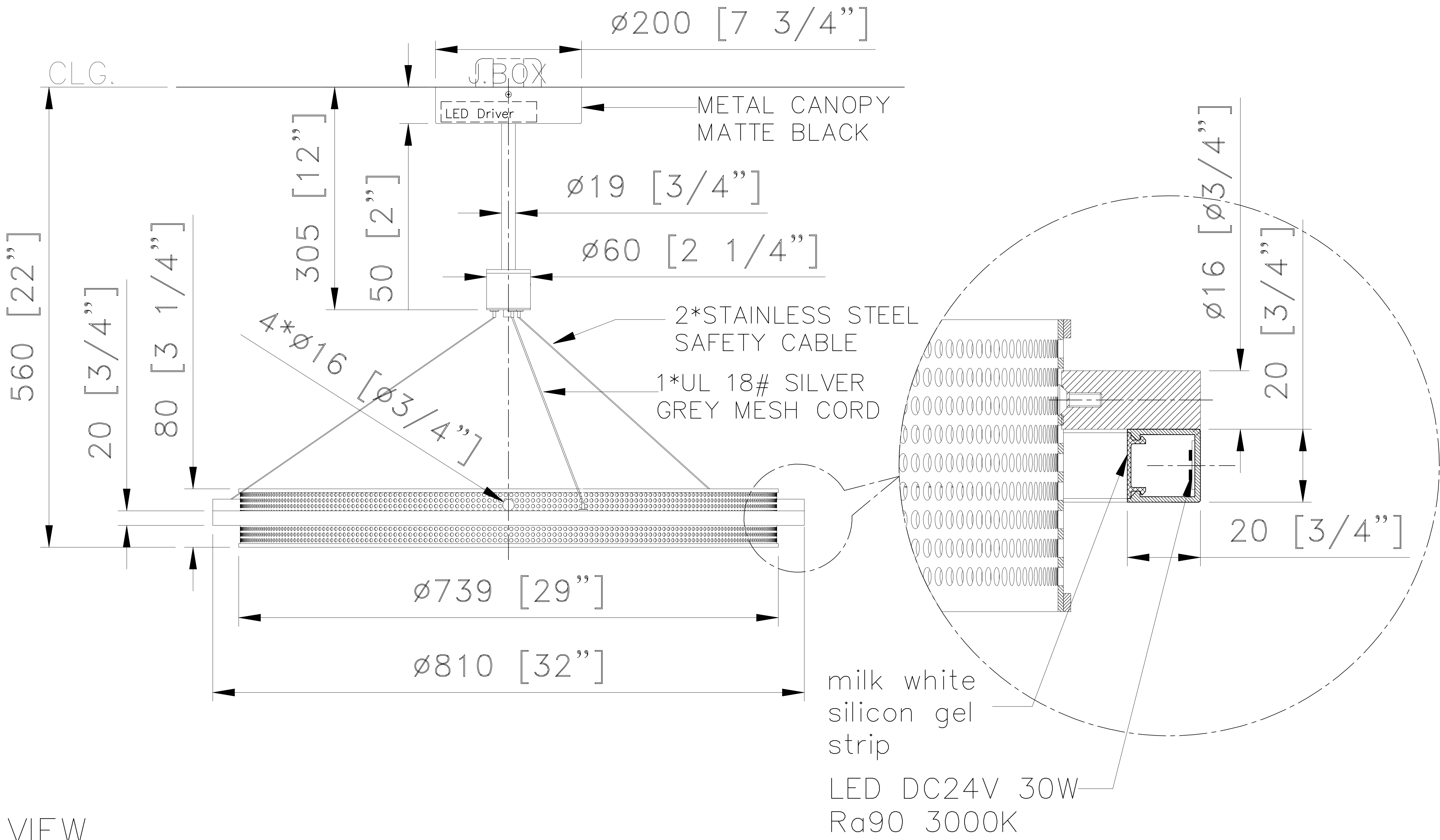


NOTES:
1)METAL:ALL EXPOSED METAL FINISH TO BE POWDER COATED MATTE BLACK EXCEPT PERFORATED METAL RING TO BE GOLD PAINTED COLOR
2)DIFFUSER:MILK WHITE SILICON GEL STRIP
3)LAMPING:INTEGRATED LED 30W 3000K,NON DIMMABLE. W/DRIVER@CANOPY
4)HARD WIRED. 120V, A.C. 60Hz
UL/CUL APPROVED
***APPROX MAX. WEIGHTS: 45LBS



TOP VIEW

SCALE: 1 : 12



FRONT VIEW

SCALE: 1 : 12

CUSTOM CHANDELIER @ IL DINNING 1146-B

ITEM NO:K13 (22) QTY:4PCS

Brightview Senior Living

Alexandria, VA

Approval: ☐ Date: _____

With comments: _____

Signed By: _____

Estimated Leads time are contingent upon receiving approved submittals and are subject to change

Les Industries CENTURY Industries Inc.

5645 Royalmount Ave.

Montreal, Quebec, Canada H4P 2P9

Tel:514-842-3933 Fax:514-842-7481

Toll free Canada only:1-877-842-3934

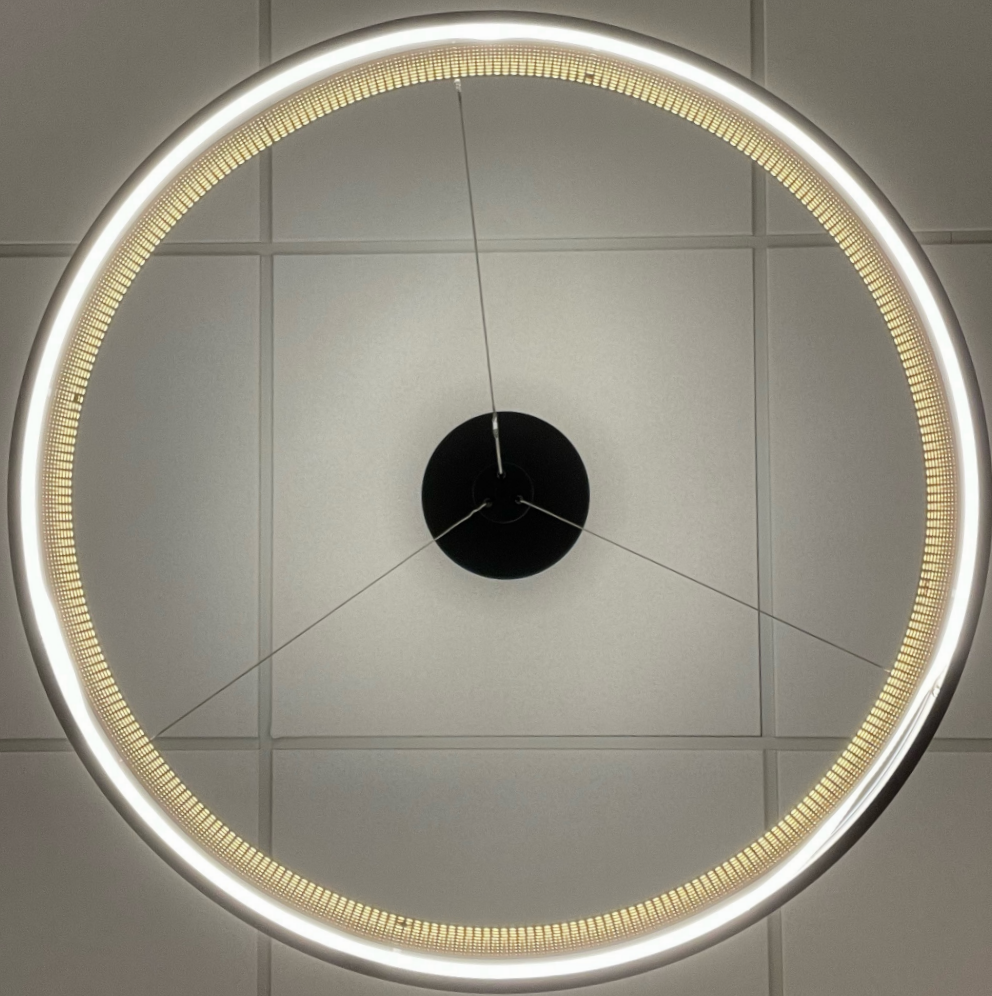
Date:2022/09/27 Rev: 2023/08/30

(yyyy/mm/dd)

(yyyy/mm/dd)

Dwg. #

P 1/1



joe kraus lighting



301-537-5808

joe@joe kraus lighting.com

www.joe kraus lighting.com